

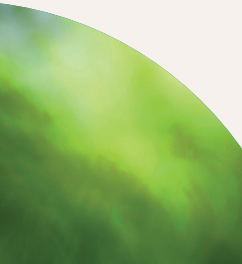


# Tanglewood

2025 SEASON



**Andris Nelsons**  
MUSIC DIRECTOR



[tanglewood.org](https://tanglewood.org)







# THE KEY OF SUMMER

Summer has its own sound, its own tempo, its own music. It slips under your skin, calms your mind, and makes life just a little more vibrant. Tanglewood brings this all together, with the lush surroundings of the Berkshires and world-class artists all gathered in one place.

**Tune in to your summer at [tanglewood.org](https://tanglewood.org).**

## Concerts & Events

- 04 Boston Symphony Orchestra
- 06 Boston Pops
- 07 Special Events
- 08 Popular Artists
- 10 BU Tanglewood Institute
- 11 Recital Series
- 12 Tanglewood Music Center
- 14 Tanglewood Learning Institute
- 16 How to Purchase Tickets



Explore the full season at  
[bso.org/tanglewood](https://bso.org/tanglewood)





Embolden, enliven, and inspire your summer with the best in classical music.

**SATURDAY, JULY 5, 10:30AM**

Open rehearsal  
(Saturday's and Sunday's programs)

**SATURDAY, JULY 5, 8:00PM**

*Opening Night at Tanglewood*  
**Andris Nelsons, conductor**  
**Daniil Trifonov, piano**  
All-RACHMANINOFF program  
Piano Concerto No. 3  
*Symphonic Dances*

**SUNDAY, JULY 6, 2:30PM**

**Andris Nelsons, conductor**  
**Yefim Bronfman, piano**  
All-BEETHOVEN program  
*Leonore Overture No. 2*  
Piano Concerto No. 3  
Symphony No. 5

**FRIDAY, JULY 11, 8:00PM**

**Andris Nelsons, conductor**  
**Concert Theatre Works**  
**Bill Barclay, director**  
**Actors**  
*Romeo and Juliet:*  
A Theatrical Concert for  
Orchestra with Actors  
Including works by BERLIOZ,  
TCHAIKOVSKY, PROKOFIEV, and ROTA

**SATURDAY, JULY 12, 10:30AM**

Open rehearsal (Sunday's program)

**SATURDAY, JULY 12, 8:00PM**

*A Ravel 150th Celebration*  
**Andris Nelsons, conductor**  
**Seong-Jin Cho, piano**  
DEBUSSY *Prelude to*  
*The Afternoon of a Faun*  
RAVEL Piano Concerto in G  
RAVEL Piano Concerto for the  
Left Hand  
DEBUSSY *La Mer*

**SUNDAY, JULY 13, 2:30PM**

**Esa-Pekka Salonen, conductor**  
**Pekka Kuusisto, violin**  
Gabriella SMITH *Tumblebird Contrails*  
SIBELIUS Violin Concerto  
SIBELIUS Symphony No. 5

**SATURDAY, JULY 19, 8:00PM**

**Andris Nelsons, conductor**  
**Kristine Opolais, soprano (Tosca)**  
**Seok Jong Baek, tenor (Cavaradossi)**  
**Sir Bryn Terfel, baritone (Scarpia)**  
**Patrick Carfizzi, bass-baritone**  
**(Sacristan)**  
**Neal Ferreira, tenor (Spoletta)**  
PUCCINI *Tosca*

*Concert performance; sung in Italian  
with English supertitles*

All BSO concerts will take place  
in the Koussevitzky Music Shed  
unless otherwise noted.





**SUNDAY, JULY 20, 10:30AM**

**Thomas Wilkins, conductor**  
Family concert  
*Family Matters*

**FRIDAY, JULY 25, 8:00PM**

**Andris Nelsons, conductor**  
**María Dueñas, violin**  
J.S. BACH Air, from Orchestral Suite No. 3  
MAHLER Adagio from Symphony No. 10  
MENDELSSOHN Violin Concerto  
MENDELSSOHN *Calm Sea and Prosperous Voyage*

**SATURDAY, JULY 26, 10:30AM**

Open rehearsal (Sunday's program)

**SATURDAY, JULY 26, 8:00PM**

**Andris Nelsons, conductor**  
**Emanuel Ax, piano**  
John WILLIAMS Piano Concerto  
(world premiere)  
MAHLER Symphony No. 1

**SUNDAY, JULY 27, 2:30PM**

**Andris Nelsons, conductor**  
**Lang Lang, piano**  
Gabriela ORTIZ *La Calaca*,  
for string orchestra  
SAINT-SÄENS Piano Concerto No. 2  
BEETHOVEN Symphony No. 6, *Pastoral*

**SATURDAY, AUGUST 2, 10:30AM**

Open rehearsal (Sunday's program)

**SATURDAY, AUGUST 2, 8:00PM**

**Elim Chan, conductor**  
**Leonidas Kavakos, violin**  
KORNGOLD Violin Concerto  
RACHMANINOFF Symphony No. 2

**FRIDAY, AUGUST 8, 8:00PM**

**Andrés Orozco-Estrada, conductor**  
**Joshua Bell, violin**  
LALO *Symphonie espagnole*  
DVOŘÁK Symphony No. 9,  
*From the New World*

**SATURDAY, AUGUST 9, 10:30AM**

Open rehearsal (Sunday's program)

**SUNDAY, AUGUST 10, 2:30PM**

**Samy Rachid, conductor**  
**Yo-Yo Ma, cello**  
Camille PÉPIN *Un Monde nouveau*  
(American premiere)  
SAINT-SÄENS Cello Concerto No. 1  
MENDELSSOHN Symphony No. 3,  
*Scottish*

**FRIDAY, AUGUST 15, 8:00PM**

**Dima Slobodeniouk, conductor**  
Caroline SHAW *Entr'acte*,  
for string orchestra  
TCHAIKOVSKY Variations on a Rococo  
Theme, for cello and orchestra  
BEETHOVEN Symphony No. 4

**SATURDAY, AUGUST 16, 10:30AM**

Open rehearsal (Sunday's program)

**SATURDAY, AUGUST 16, 8:00PM**

**Anna Handler, conductor**  
**Augustin Hadelich, violin**  
BRAHMS *Tragic* Overture  
SCHUMANN Symphony No. 4  
TCHAIKOVSKY Violin Concerto

**SUNDAY, AUGUST 17, 2:30PM**

**Dima Slobodeniouk, conductor**  
**Jean-Yves Thibaudet, piano**  
STILL *Threnody*  
(In Memory of Jan Sibelius)  
LISZT Piano Concerto No. 2  
SIBELIUS *Valse triste*  
SIBELIUS Symphony No. 3

**SATURDAY, AUGUST 23, 10:30AM**

Open rehearsal (Sunday's program)

**SATURDAY, AUGUST 23, 8:00PM**

**Kazuki Yamada, conductor**  
**Tanglewood Festival Chorus,**  
**James Burton, conductor**  
POULENC *Gloria*  
HOLST *The Planets*

**SUNDAY, AUGUST 24, 2:30PM**

**Zubin Mehta, conductor**  
**James Burton, conductor** (Simon)  
**Federica Lombardi, soprano**  
**Isabel Signoret, mezzo-soprano**  
**Pene Pati, tenor**  
**Ryan Speedo Green, bass-baritone**  
**Tanglewood Festival Chorus,**  
**James Burton, conductor**  
Carlos SIMON New work for the  
Tanglewood Festival Chorus  
(world premiere; BSO commission)  
BEETHOVEN Symphony No. 9

## Prelude Concerts

**FRIDAY, JULY 11, 25 &  
AUGUST 1, 8, 15, 22, 6:00PM**

Seiji Ozawa Hall  
Members of the  
Boston Symphony Orchestra

**FRIDAY, JULY 18, 6:00PM**

Seiji Ozawa Hall  
Tanglewood Festival Chorus,  
James Burton, conductor

Explore BSO programming  
all year long at [bso.org](https://www.bso.org)





Relax and make new memories —  
Boston Pops concerts with conductor  
Keith Lockhart offer something for everyone.

**FRIDAY, JULY 18, 8:00PM**

Keith Lockhart, conductor  
Kelli O'Hara and Sutton Foster

**FRIDAY, AUGUST 1, 8:00PM**

*Star Wars: Return of the Jedi*  
in Concert

Luke Skywalker faces Darth Vader  
in a final duel.

© 1983 & TM Lucasfilm Ltd. Presentation  
licensed by Disney Concerts in association with  
20th Century Fox Film Corp, Lucasfilm and  
Warner/Chappell Music. © All rights reserved.

**SATURDAY, AUGUST 9, 8:00PM**

John Williams, curator  
Keith Lockhart, conductor  
*John Williams' Film Night*

A cherished Tanglewood tradition,  
*John Williams' Film Night* returns with  
a fabulous program of film music  
highlights specially curated by  
Maestro Williams himself and featuring  
Keith Lockhart and the Boston Pops.  
It's a special evening of magical music  
and selected film clips that you won't  
want to miss!

**FRIDAY, AUGUST 22, 8:00PM**

Keith Lockhart, conductor  
*Keith Lockhart*  
*30th Anniversary Celebration*

Celebrate the joy, connection,  
and unforgettable moments Keith  
has brought to our orchestra and  
our community since 1995, with  
special guests, including Ben Folds,  
Lynn Ahrens, Bernadette Peters,  
Time for Three, and Jason Danieley.



All Pops concerts will take place  
in the Koussevitzky Music Shed.

Explore all  
Boston Pops  
concerts at  
[bostonpops.org](http://bostonpops.org)





# Special Events

**FRIDAY, JULY 11, 5:00PM**

*Summer Celebration at Tanglewood*

Join us: [bso.org/summercelebration](http://bso.org/summercelebration)



**SUNDAY, AUGUST 3, 2:30PM**

**All-BEETHOVEN program**

Koussevitzky Music Shed

Leonidas Kavakos, violin

Antoine Tamestit, viola

Yo-Yo Ma, cello

Emanuel Ax, piano

*Leonore* Overture No. 3

(trans. Shai Wosner)

Trio No. 4 in B-flat for piano, violin,  
and cello, Op. 11

Symphony No. 3, *Eroica*

(trans. Shai Wosner)

All programs, performers, and repertoire are subject to change. Please visit [bso.org](http://bso.org) for the latest information.

**TUESDAY, AUGUST 5**

*Tanglewood on Parade*

This annual day of family fun is one of the highlights of the season, with free children's activities, performances throughout the afternoon, and fireworks to end the day.

2:30pm, Seiji Ozawa Hall  
**Tanglewood Music Center**  
Chamber Music

3:30pm, Studio E, Linde Center  
for Music and Learning  
**Tanglewood Music Center**  
Piano Concert

5:00pm, Studio E, Linde Center  
for Music and Learning  
**Tanglewood Music Center**  
Vocal Music



8:00pm, Koussevitzky Music Shed  
**Boston Symphony Orchestra**  
**Boston Pops Orchestra**  
**Tanglewood Music Center Orchestra**  
**Keith Lockhart and Eilm Chan,**  
**conductors**

Program to include:  
TCHAIKOVSKY *1812* Overture

The tradition returns! Join us for explosive fun at our annual concert celebrating Tchaikovsky's *1812* Overture.

*Fireworks to follow the concert*

**THURSDAY, AUGUST 28, 8:00PM**

**Wait Wait... Don't Tell Me!**

**Koussevitzky Music Shed**

NPR's oddly informative news quiz program is again live at Tanglewood. The Peabody Award-winning series offers a fast-paced, irreverent look at the week's news, hosted by Peter Sagal along with judge and score-keeper Bill Kurtis.



Wait Wait...  
Don't Tell Me!

**BONNIE RAITT**

Sunday, August 31

7:00pm

Koussevitzky

Music Shed



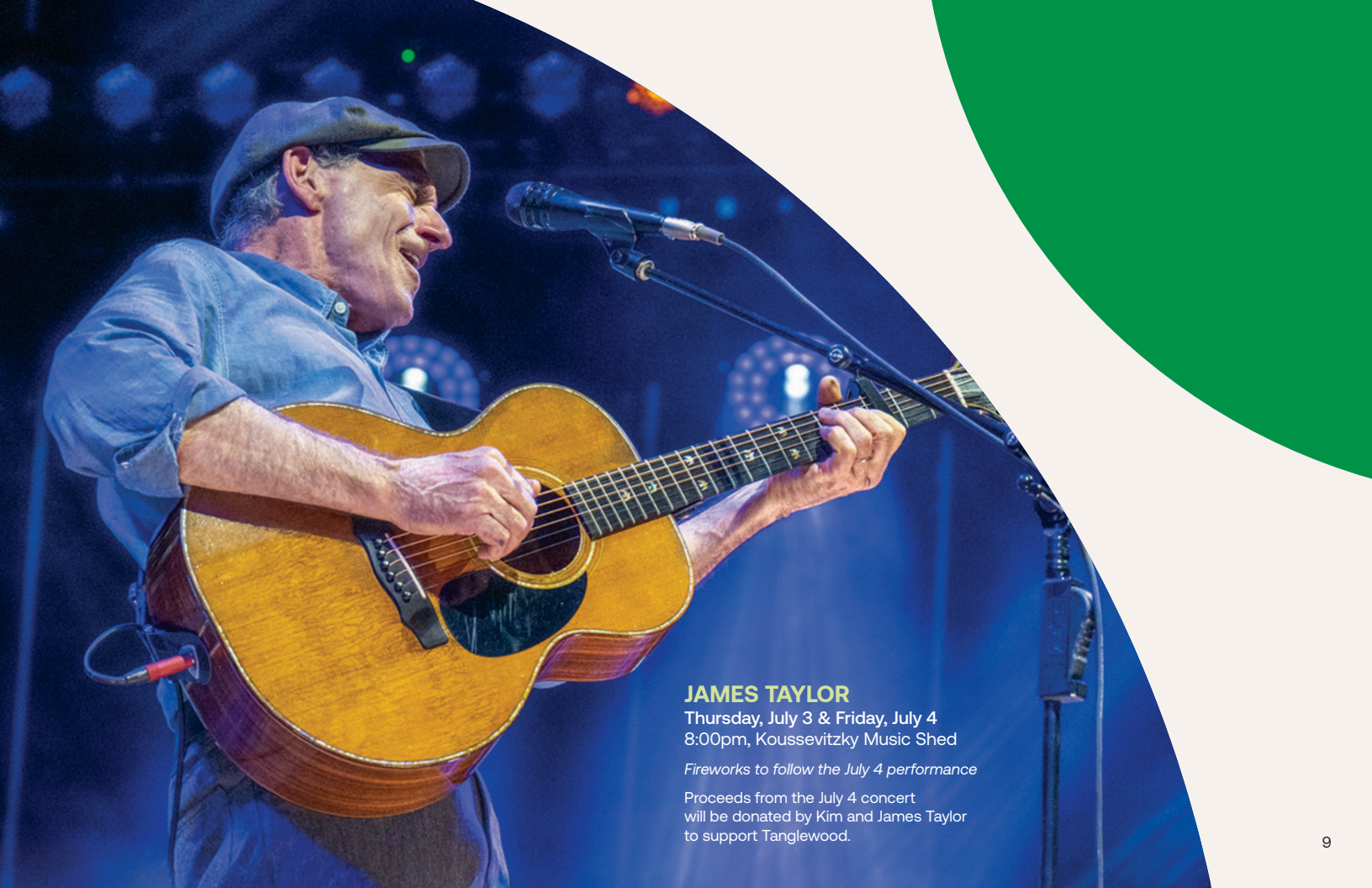
# POPULAR ARTISTS

Get excited to see live performances from today's most influential and electrifying artists across genres.



Check our website for more incredible concerts to be announced! Scan the QR code for the latest information.





## **JAMES TAYLOR**

Thursday, July 3 & Friday, July 4  
8:00pm, Koussevitzky Music Shed

*Fireworks to follow the July 4 performance*

Proceeds from the July 4 concert  
will be donated by Kim and James Taylor  
to support Tanglewood.



## BU Tanglewood Institute

Meet the next generation of passionate, up-and-coming artists at these concerts for musicians aged 14-20.

**SATURDAY, JULY 19 &  
AUGUST 2, 16, 1:30PM**

Seiji Ozawa Hall  
BU Tanglewood Institute  
Young Artists Orchestra

**SUNDAY, JULY 20 &  
AUGUST 3, 1:30PM**

Seiji Ozawa Hall  
BU Tanglewood Institute  
Young Artists Wind Ensemble

**SATURDAY, AUGUST 9, 1:30PM**

Seiji Ozawa Hall  
BU Tanglewood Institute  
Young Artists Chorus





## Recital Series

Enjoy world-class soloists and ensembles performing exclusive programs crafted specially for Tanglewood.

### THURSDAY, JULY 10, 8:00PM

Boston Symphony Chamber Players

Program to include:

Jessie MONTGOMERY *Strum*,

for string quintet

Carlos SIMON *move it*, for solo flute

Carlos SIMON *between worlds*,

for solo cello

Carlos SIMON *Giants*, for wind quintet



Seong-Jin Cho

### TUESDAY, JULY 15, 8:00PM

Sir Bryn Terfel, bass-baritone

Hannah Stone, harp

### WEDNESDAY, JULY 16, 8:00PM

*A Ravel 150th Celebration*

Seong-Jin Cho, piano

*Complete solo piano music  
of Maurice Ravel*

### THURSDAY, AUGUST 7, 8:00PM

American Modern Opera

Company (AMOC)

Matthew Aucoin, conductor

Staged by Peter Sellars

Meryl Dominguez, soprano

Taylor Raven, mezzo-soprano

Paul Appleby, tenor

Matthew AUCOIN

*Music for New Bodies*

Libretto based on poetry by

Jorie Graham, selected

by Matthew Aucoin

and Peter Sellars

### WEDNESDAY, AUGUST 13, 8:00PM

Brooklyn Rider

Yo-Yo Ma, cello (Schubert)

Colin JACOBSEN *A Short While*

*to be Here*

Reena ESMAIL *Zeher*

Philip GLASS String Quartet No. 3,

*Mishima*

SCHUBERT String Quintet in C, D.956

### THURSDAY, AUGUST 14, 8:00PM

The Sixteen

Harry Christophers, conductor

*A Deer's Cry*

Including works by BYRD, TALLIS,  
and Arvo PÄRT

All Recital Series concerts will take place  
in Seiji Ozawa Hall.



The Sixteen



Experience the next generation of classical music at performances by the Fellows of the Tanglewood Music Center, the Boston Symphony Orchestra's summer academy for advanced musical study.

## Tanglewood Music Center Orchestra



Esa-Pekka Salonen

### MONDAY, JULY 7, 8:00PM

Koussevitzky Music Shed  
**Andris Nelsons, conductor** (Brahms)  
 TMC Conducting Fellows  
 Program to include:  
 BRAHMS *Symphony No. 2* in D

### MONDAY, JULY 14, 8:00PM

Seiji Ozawa Hall  
**Esa-Pekka Salonen, conductor**  
 (Stravinsky)  
 TMC Conducting Fellows  
 Program to include:  
 STRAVINSKY *The Rite of Spring*

### SATURDAY, JULY 19, 10:30AM

Koussevitzky Music Shed  
 Open rehearsal (Sunday's 2:30pm  
 program with TMC)

### SUNDAY, JULY 20, 2:30PM

Koussevitzky Music Shed  
*The Leonard Bernstein  
 Memorial Concert*  
**Andris Nelsons, conductor**  
**Yuja Wang, piano**  
 PROKOFIEV *Piano Concerto No. 2*  
 BERLIOZ *Symphonie fantastique*

### MONDAY, AUGUST 4, 8:00PM

*A Ravel 150th Celebration*  
 Seiji Ozawa Hall  
 TMC Conducting Fellows  
 TMC Vocal Fellows  
 RAVEL *L'enfant et les sortilèges*

### MONDAY, AUGUST 11, 8:00PM

Seiji Ozawa Hall  
**Andrés Orozco-Estrada, conductor**  
 (Mussorgsky)  
 TMC Conducting Fellows  
 Program to include:  
 MUSSORGSKY (orch. RAVEL)  
*Pictures at an Exhibition*

### MONDAY, AUGUST 18, 8:00PM

Seiji Ozawa Hall  
**Dima Slobodeniouk, conductor**  
 (Tchaikovsky)  
 TMC Conducting Fellows  
 Program to include:  
 TCHAIKOVSKY *Symphony No. 4*



## Chamber Music

**SUNDAY, JUNE 29, 10:00AM**

Seiji Ozawa Hall

Music for Brass and Percussion

**TUESDAY, JULY 1, 2:30PM**

Seiji Ozawa Hall

Opening Exercises

**SUNDAY, JULY 6, 13, 20 &  
AUGUST 3, 10, 17, 10:00AM**

Seiji Ozawa Hall

**MONDAY, AUGUST 11, 1:30PM**

Studio E, Linde Center

for Music and Learning

Music for solo piano

**MONDAY, AUGUST 18, 1:30PM**

Studio E, Linde Center

for Music and Learning

**New Fromm Players**

Including new works by the

2025 TMC Composition Fellows

## Vocal Music

**SATURDAY, JUNE 28 &  
SUNDAY, JULY 6, 13, 7:00PM**

Studio E, Linde Center

for Music and Learning

## Festival of Contemporary Music

**Gabriela Ortiz**

The Merwin Geffen, M.D. and Norman Solomon, M.D.

Festival of Contemporary Music Director

**THURSDAY, JULY 24, 8:00PM**

**Ortiz and the Mexican Tradition**

Seiji Ozawa Hall

Gabriela ORTIZ *Tin-Tan* –

*Fanfarria y Mambo*

ORTIZ *Puzzle-Tocas*

ORTIZ *Tres Haikus*

Carlos CHÁVEZ *Cantos de Mexico*

Mario LAVISTA *Reflejos de la Noche*

Diana SYRSE *Mi Canto*

ORTIZ *Río Brava*

**FRIDAY, JULY 25, 2:30PM**

**Mexico, Cuba, the U.S., and  
one hundred years of percussion**

Seiji Ozawa Hall

ORTIZ *Río de mariposas*

LAVISTA *Musicas de cristal*

CHÁVEZ *Xochipilli*

ROLDÁN *Ritmico V* and VI

VARÈSE *Ionisation*

**SATURDAY, JULY 26, 2:30PM**

**Music of Migration and Exile**

Seiji Ozawa Hall

ORTIZ *Exilios*

Georgina DERBEZ *Transit*

ORTIZ *Liquid Borders*

**SATURDAY, JULY 26, 6:00PM**

**Prelude Concert**

Studio E, Linde Center

for Music and Learning

Gabriella SMITH *Carrot Revolution*

ORTIZ *Altar de muertos*

**SUNDAY, JULY 27, 10:00AM**

**The Natural World**

Seiji Ozawa Hall

ORTIZ *Cedrus*

ORTIZ *Canciones de agua*

ORTIZ *Vitrales de ambar*

Arthur MARQUEZ

*Dibujos sobre un puerto*

Ellen REID *West Coast Sky Forever*

REID *The Birds Belong to All of Us*

**MONDAY, JULY 28, 8:00PM**

Seiji Ozawa Hall

**Tanglewood Music Center Orchestra**

**Thomas Wilkins, conductor**

**TMC Conducting Fellows**

Including works by Gabriela ORTIZ,

Ellen REID, and Gabriella SMITH

## String Quartet Marathon

**SUNDAY, JUNE 29**

1:00pm, 4:00pm & 8:00pm,

Seiji Ozawa Hall

## Prelude Concerts

**SATURDAY, JULY 5, 19 &  
AUGUST 2, 9, 6:00PM**

Studio E, Linde Center

for Music and Learning

Chamber Music

**SATURDAY, JULY 12, 6:00PM**

Studio E, Linde Center

for Music and Learning

Oswaldo GOLIJOV Ayre,

for soprano and ensemble

**SATURDAY, AUGUST 16, 6:00PM**

Studio E, Linde Center

for Music and Learning

Vocal Music of J.S. BACH



Scan to see all  
TMC events



Widen your world, awaken your mind. TLI is your center for workshops and special events to deepen your understanding of our music and ourselves.

## TLI Presents

**FRIDAY, JULY 18, 4:00PM**

Hilary Poriss, Professor and  
Chair, Department of Music,  
Northeastern University

Behind the Melodrama:  
The Human Heart of *Tosca*\*

**SUNDAY, JULY 20, 7:00PM**

Seiji Ozawa Hall  
Trumpet Summit featuring the  
Ted Rosenthal Trio

**SUNDAY, JULY 27, 7:00PM**

Karen Slack, soprano  
Kevin Miller, piano  
*African Queens*

**SATURDAY, AUGUST 2, 2:00PM**

*A Ravel 150th Celebration*  
Concert Theatre Works  
Parker String Quartet  
*Letters to a Young Poet*

**MONDAY, AUGUST 4, 6:00PM**

*A Ravel 150th Celebration*  
Seiji Ozawa Hall  
BSO Director of Program Publications  
Robert Kirzinger with TMC Head of  
the Vocal Arts Program Dawn Upshaw  
Incantations and Opera: Ravel and  
Colette's *L'Enfant et les sortilèges*°

**SATURDAY, AUGUST 9, 2:00PM**

Aracelis Girmay  
*An Experiment in Voices* (world premiere)  
*In collaboration with Castle of our Skins*  
and the Authors Guild Foundation

**SUNDAY, AUGUST 10, 7:00PM**

TMC Silent Film Project°

**SUNDAY, AUGUST 10, 9:00PM**

TMC Silent Film Project°

**SATURDAY, AUGUST 16, 2:00PM**

Nicholas Phan  
BACH 52, Part I<sup>^</sup>

**SUNDAY, AUGUST 17, 7:00PM**

Nicholas Phan  
BACH 52, Part II<sup>^</sup>

**SATURDAY, AUGUST 23, 2:00PM**

*Play With Time* featuring music of  
Philip Glass  
*In collaboration with the Massachusetts*  
*International Festival of the Arts (MIFA) and*  
*Ensemble for the Romantic Century (ERC)*

**SUNDAY, AUGUST 24, 7:00PM**

*Play With Time* featuring music of  
Philip Glass  
*In collaboration with the Massachusetts*  
*International Festival of the Arts (MIFA) and*  
*Ensemble for the Romantic Century (ERC)*

\* TLI/BSO companion program

° TLI/TMC companion program

^ TLI/Recital Series companion program

## Meet the Makers

**WEDNESDAY, JULY 9, 5:00PM**

*Romeo and Juliet\**

**THURSDAY, JULY 17, 8:00PM**

Live Music and Moving Pictures  
with **Keith Lockhart**

**THURSDAY, JULY 24, 4:00PM**

Tambuco°

**FRIDAY, AUGUST 1, 4:00PM**

*Letters to a Young Poet*

**THURSDAY, AUGUST 7, 6:00PM**

Seiji Ozawa Hall  
**Matthew Aucoin** *Music for*  
*New Bodies*

**FRIDAY, AUGUST 8, 4:00PM**

**Aracelis Girmay**  
*An Experiment in Voices*

**FRIDAY, AUGUST 15, 4:00PM**

**Nicholas Phan**^^

**FRIDAY, AUGUST 22, 4:00PM**

*Play With Time*

## TLI Focal Point

**SATURDAY, JULY 12 &  
AUGUST 16, 11:00AM**

Main Gate  
Introduction to  
Smartphone Photography

**SATURDAY, JULY 19, 11:00AM**

Main Gate  
Introduction to  
DSLR/Mirrorless Photography

**SATURDAY, JULY 26 &  
AUGUST 23, 11:00AM**

Main Gate  
Smartphone Intensive

**SATURDAY, AUGUST 2, 10:30AM**

Seiji Ozawa Hall  
Performance Photography

## TLI Talks and Walks\*

Anthony Fogg, BSO Vice President  
of Artistic Planning, moderates  
this series of talks with special  
guest artists.

**THURSDAY, JULY 10, 17, 24, 31 &  
AUGUST 7, 14, 21, 1:00PM**

Tent Club

## Open Workshops

**WEDNESDAY, JUNE 25, 1:30PM**

Techniques of string quartet  
performance°

**WEDNESDAY, JULY 2, 1:30PM**

**Thomas Rolfs**, trumpet\*°

**WEDNESDAY, JULY 9, 1:30PM**

**Blaise Déjardin**, cello\*°

**WEDNESDAY, JULY 16, 1:30PM**

Vocal Class°

**WEDNESDAY, JULY 23, 1:30PM**

**Nathan Cole**, violin\*°

**WEDNESDAY, JULY 30, 1:30PM**

**Thomas Wilkins**, conductor\*°

**WEDNESDAY, AUGUST 6, 1:30PM**

**Orli Shaham**, piano°

**WEDNESDAY, AUGUST 13, 1:30PM**

## Spotlight Series

For up-to-date information about  
the 2025 TLI Spotlight Series,  
please visit [tli.org](http://tli.org).

## The Art of Conducting

**SUNDAY, JULY 13, 11:00AM**

**Andris Nelsons**\*°

**MONDAY, JULY 21, 7:00PM**

Great Conductors on Film\*°

**TUESDAY, JULY 22, 4:00PM**

**Andris Nelsons**\*°

## TLI for Families

**SUNDAY, JULY 6, 10:30AM**

Featuring **Baba Israel** and  
**Louis Henry Mitchell**  
Collective imagination –  
Visual Arts, Music, and Storytelling!

*In collaboration with*  
*Normal Rockwell Museum*

**SUNDAY, JULY 27, 10:30AM**

*Peter and the Wolf*

*In collaboration with*  
*BU Tanglewood Institute*

**SUNDAY, AUGUST 3, 10:30AM**

Circle Round



All TLI events will take place in Studio E,  
Linde Center for Music and Learning  
unless otherwise noted.



# How to Purchase Tickets

The only official place to buy tickets online is at [bso.org](https://www.bso.org).

Call 617-266-1200 or 888-266-1200 to order tickets. Friends of Tanglewood may order advance tickets at [tanglewood.org/advancetickets](https://www.tanglewood.org/advancetickets) before public sale begins on Thursday, March 6, 2025 at 10:00am.

Groups of 15 or more are eligible for advance sales, discounts, waived fees, and the use of private tents for most performances. For more information, contact the Group Sales Office at [groupsales@bso.org](mailto:groupsales@bso.org) or 617-638-9345.

## Berkshire Resident Season Lawn Pass

Berkshire County residents can purchase a 2025 Season Lawn Pass for \$150. The pass is available in person at the Box Office beginning June 21 at 12:00pm. Please be ready to verify your address with a Massachusetts State ID. Season passes are not valid for the Popular Artist Series or any TLI event.

## Lawn Ticket Book

Lawn Ticket Books are available for \$230 through August 17. These books contains 11 lawn tickets valid for any BSO and Pops concerts in the Koussevitzky Music Shed and Seiji Ozawa Hall. These tickets are not valid for the Popular Artist Series or any TLI event.

## Saturday Morning Rehearsals

Rehearsals begin at 10:30am in the Koussevitzky Music Shed. Pre-rehearsal talks begin at 9:30am and are free to rehearsal ticket holders. Please keep in mind these are not full performances; rehearsals may repeat passages and omit movements or entire pieces.

**Photography:** Beijing Youth Weekly, Jason Bell, Kia Caldwell, Andrew Eccles, Olaf Heine, Harald Hoffmann, Phillip Knott, Christoph Köstlin, Chris Lee, Michael J. Lutch, Johnny Millar, Michael Nock, Hilary Scott, Polina Vijun

## Prelude Concerts

Admission to the 6:00pm Prelude Concerts is complimentary and exclusively available to patrons holding tickets for that evening's 8:00pm performance.

## Accessibility

For information about accessibility and accommodations, please call us at 617-638-9431, email [access@bso.org](mailto:access@bso.org), or visit [tanglewood.org/accessibility](https://www.tanglewood.org/accessibility).

## Tanglewood for Kids

Up to four free children's tickets are available per parent/legal guardian per concert at the Tanglewood Box Office on the day of the performance.

- To minimize disruptions, children under 5 are not permitted in the Koussevitzky Music Shed during concerts, except for the Family Concert on Sunday, July 20. Families with children under 5 may enjoy music on the lawn.
- All patrons, regardless of age, must have a ticket.
- This program does not apply to the Popular Artist Series, TLI events, or summer camps, field trips, or other organized groups.

*The 2025 Tanglewood Free Lawn Tickets for Children and Young People Program is supported by a generous gift from the Pumpkin Foundation in memory of Carol F. Reich, as well as Beth and Richard Fentin.*



Scan for tickets and  
more information



MONDAY

TUESDAY

WEDNESDAY

THURSDAY

QUICK REFERENCE CALENDAR

# JUNE/JULY

30	1 <b>TMC</b> 2:30pm, Opening Exercises  JULY	25 <b>TLI</b> 1:30pm, Open Workshops 2 <b>TLI</b> 1:30pm, Open Workshops	26 3 <b>PAS</b> 8:00pm, James Taylor
7 <b>TMCO</b> 8:00pm, Nelsons	8	9 <b>TLI</b> 1:30pm, Open Workshops <b>TLI</b> 5:00pm, Meet the Makers	10 <b>TLI</b> 1:00pm, TLI Talks and Walks <b>REC</b> 8:00pm, Boston Symphony Chamber Players
14 <b>TMCO</b> 8:00pm, Salonen	15 <b>REC</b> 8:00pm, Terfel	16 <b>TLI</b> 1:30pm, Open Workshops <b>REC</b> 8:00pm, Cho	17 <b>TLI</b> 1:00pm, TLI Talks and Walks <b>TLI</b> 8:00pm, Meet the Makers
21 <b>TLI</b> 7:00pm, The Art of Conducting	22 <b>TLI</b> 4:00pm, The Art of Conducting	23 <b>TLI</b> 1:30pm, Open Workshops	24 <b>TLI</b> 1:00pm, TLI Talks and Walks <b>TLI</b> 4:00pm, Meet the Makers <b>TMC</b> 8:00pm, <i>Festival of Contemporary Music</i>
28 <b>TMCO</b> 8:00pm, <i>Festival of Contemporary Music</i>	29	30 <b>TLI</b> 1:30pm, Open Workshops	31 <b>TLI</b> 1:00pm, TLI Talks and Walks



FRIDAY		SATURDAY		SUNDAY	
27		28	<b>TMC</b> 7:00pm, Vocal Music	29	<b>TMC</b> 10:00am, Chamber Music <b>TMC</b> 1:00pm, 4:00pm, 8:00pm, TMC String Quartet Marathon
4	<b>PAS</b> 8:00pm, James Taylor	5	<b>BSO</b> 10:30am, Open Rehearsal <b>TMC</b> 6:00pm, Prelude Concert <b>BSO</b> 8:00pm, <i>Opening Night at Tanglewood</i> , Nelsons/Trifonov	6	<b>TMC</b> 10:00am, Chamber Music <b>TLI</b> 10:30am, TLI for Families <b>BSO</b> 2:30pm, Nelsons/Bronfman <b>TMC</b> 7:00pm, Vocal Music
11	<b>S.E.</b> 5:00pm, <i>Summer Celebration at Tanglewood</i> <b>BSO</b> 6:00pm, Prelude Concert <b>BSO</b> 8:00pm, Nelsons/ Concert Theatre Works	12	<b>BSO</b> 10:30am, Open Rehearsal <b>TLI</b> 11:00am, TLI Focal Point <b>TMC</b> 6:00pm, Prelude Concert <b>BSO</b> 8:00pm, Nelsons/Cho	13	<b>TMC</b> 10:00am, Chamber Music <b>TLI</b> 11:00am, The Art of Conducting <b>BSO</b> 2:30pm, Salonen/Kuusisto <b>TMC</b> 7:00pm, Vocal Music
18	<b>TLI</b> 4:00pm, TLI Presents <b>BSO</b> 6:00pm, Prelude Concert <b>Pops</b> 8:00pm, Lockhart/O'Hara/Foster	19	<b>BSO</b> 10:30am, Open Rehearsal <b>TLI</b> 11:00am, TLI Focal Point <b>TMC</b> 6:00pm, Prelude Concert <b>BSO</b> 8:00pm, Nelsons/Opolais/Baek/Carfizzi	20	<b>TMC</b> 10:00am, Chamber Music <b>BSO</b> 10:30am, Family Concert, Wilkins <b>TMCO</b> 2:30pm, Nelsons/Wang <b>TLI</b> 7:00pm, TLI Presents
25	<b>TMC</b> 2:30pm, <i>Festival of Contemporary Music</i> <b>BSO</b> 6:00pm, Prelude Concert <b>BSO</b> 8:00pm, Nelsons/Dueñas	26	<b>BSO</b> 10:30am, Open Rehearsal <b>TLI</b> 11:00am, TLI Focal Point <b>TMC</b> 2:30pm, <i>Festival of Contemporary Music</i> <b>TMC</b> 6:00pm, Prelude Concert, <i>Festival of Contemporary Music</i> <b>BSO</b> 8:00pm, Nelsons/Ax	27	<b>TMC</b> 10:00am, <i>Festival of Contemporary Music</i> <b>TLI</b> 10:30am, TLI for Families <b>BSO</b> 2:30pm, Nelsons/Lang <b>TLI</b> 7:00pm, TLI Presents

**BSO** Boston Symphony Orchestra  
**Pops** Boston Pops Orchestra

**TMC** Tanglewood Music Center  
**TLI** Tanglewood Learning Institute

**PAS** Popular Artist Series  
**REC** Recital Series

**S.E.** Special Events

MONDAY

TUESDAY

WEDNESDAY

THURSDAY

QUICK REFERENCE CALENDAR

# AUGUST

<p>4 <b>TLI</b> 6:00pm, TLI Presents <b>TMCO</b> 8:00pm, TMC Conducting Fellows</p>	<p>5 <b>S.E. Tanglewood on Parade</b> <b>TMC</b> 2:30pm, Chamber Music <b>TMC</b> 3:30pm, Piano Concert <b>TMC</b> 5:00pm, Vocal Music <b>BSO</b> 8:00pm, Lockhart/Chan</p>	<p>6 <b>TLI</b> 1:30pm, Open Workshops</p>	<p>7 <b>TLI</b> 1:00pm, TLI Talks and Walks <b>TLI</b> 6:00pm, Meet the Makers <b>REC</b> 8:00pm, Aucoin/Sellars</p>
<p>11 <b>TMC</b> 1:30pm, Chamber Music <b>TMCO</b> 8:00pm, Orozco-Estrada</p>	<p>12</p>	<p>13 <b>TLI</b> 1:30pm, Open Workshops <b>REC</b> 8:00pm, Rider/Ma</p>	<p>14 <b>TLI</b> 1:00pm, TLI Talks and Walks <b>REC</b> 8:00pm, The Sixteen</p>
<p>18 <b>TMC</b> 1:30pm, New Fromm Players <b>TMCO</b> 8:00pm, Slobodeniouk</p>	<p>19</p>	<p>20</p>	<p>21 <b>TLI</b> 1:00pm, TLI Talks and Walks</p>
<p>25</p>	<p>26</p>	<p>27</p>	<p>28 <b>S.E.</b> 8:00pm, Wait Wait... Don't Tell Me!</p>

FRIDAY		SATURDAY		SUNDAY	
1	<b>TLI</b> 4:00pm, Meet the Makers <b>BSO</b> 6:00pm, Prelude Concert <b>Pops</b> 8:00pm, <i>Star Wars: Return of the Jedi in Concert</i>	2	<b>BSO</b> 10:30am, Open Rehearsal <b>TLI</b> 10:30am, TLI Focal Point <b>TLI</b> 2:00pm, TLI Presents <b>TMC</b> 6:00pm, Prelude Concert <b>BSO</b> 8:00pm, Chan/Kavakos	3	<b>TMC</b> 10:00am, Chamber Music <b>TLI</b> 10:30am, TLI for Families <b>S.E.</b> 2:30pm, Kavakos/Tamestit/Ma/Ax
8	<b>TLI</b> 4:00pm, Meet the Makers <b>BSO</b> 6:00pm, Prelude Concert <b>BSO</b> 8:00pm, Orozco-Estrada/Bell	9	<b>BSO</b> 10:30am, Open Rehearsal <b>TLI</b> 2:00pm, TLI Presents <b>TMC</b> 6:00pm, Prelude Concert <b>Pops</b> 8:00pm, <i>John Williams' Film Night</i>	10	<b>TMC</b> 10:00am, Chamber Music <b>BSO</b> 2:30pm, Rachid/Ma <b>TLI</b> 7:00pm, TLI Presents <b>TLI</b> 9:00pm, TLI Presents
15	<b>TLI</b> 4:00pm, Meet the Makers <b>BSO</b> 6:00pm, Prelude Concert <b>BSO</b> 8:00pm, Slobodeniouk	16	<b>BSO</b> 10:30am, Open Rehearsal <b>TLI</b> 11:00am, TLI Focal Point <b>TLI</b> 2:00pm, TLI Presents <b>TMC</b> 6:00pm, Prelude Concert <b>BSO</b> 8:00pm, Handler/Hadelich	17	<b>TMC</b> 10:00am, Chamber Music <b>BSO</b> 2:30pm, Slobodeniouk/Thibaudet <b>TLI</b> 7:00pm, TLI Presents
22	<b>TLI</b> 4:00pm, Meet the Makers <b>BSO</b> 6:00pm, Prelude Concert <b>Pops</b> 8:00pm, <i>Keith Lockhart 30th Anniversary Celebration</i>	23	<b>BSO</b> 10:30am, Open Rehearsal <b>TLI</b> 11:00am, TLI Focal Point <b>TLI</b> 2:00pm, TLI Presents <b>BSO</b> 8:00pm, Yamada/Burton	24	<b>BSO</b> 2:30pm, Mehta/Burton <b>TLI</b> 7:00pm, TLI Presents
29		30		31	<b>PAS</b> 7:00pm, Bonnie Raitt

**BSO** Boston Symphony Orchestra  
**Pops** Boston Pops Orchestra

**TMC** Tanglewood Music Center  
**TLI** Tanglewood Learning Institute

**PAS** Popular Artist Series  
**REC** Recital Series

**S.E.** Special Events





Thank You to Our Tanglewood Season Sponsors



OFFICIAL VEHICLE



OFFICIAL HEALTH SYSTEM