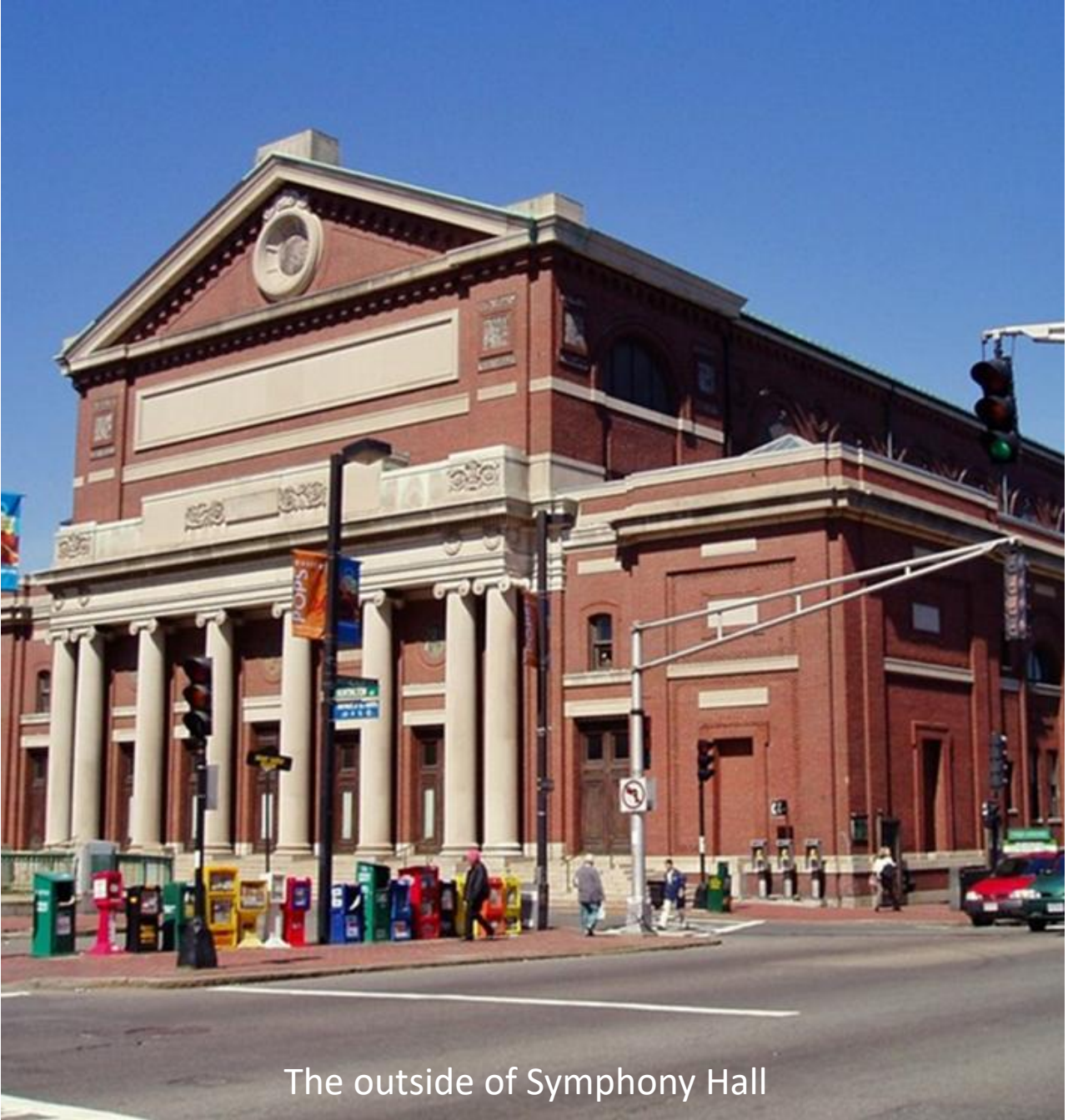


SOCIAL NARRATIVE
for the Sensory-Friendly Performance of
Holiday Pops

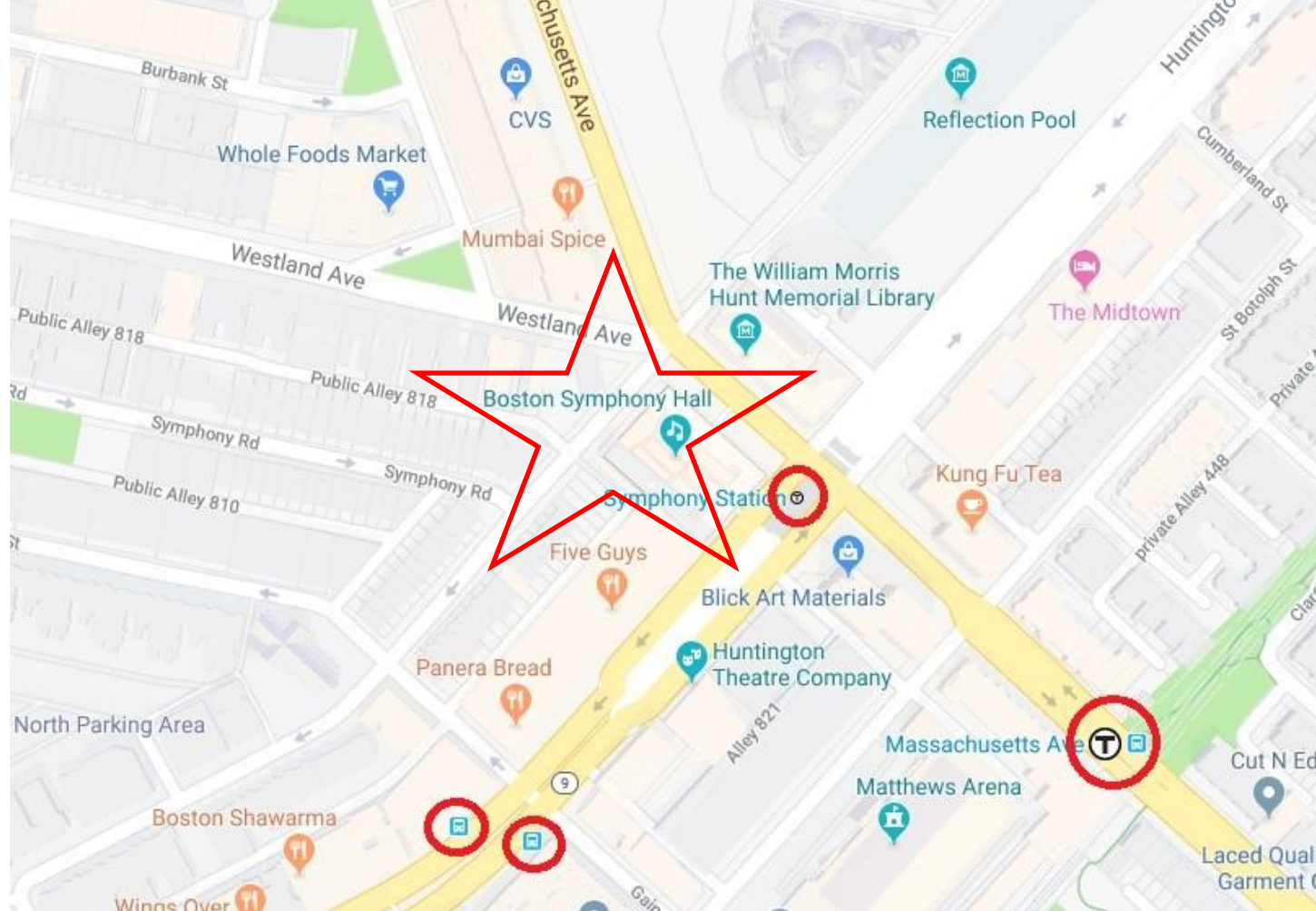


Welcome! We cannot wait to see you at Symphony Hall for a fun and festive time!



The outside of Symphony Hall

I am going to
Symphony Hall to see
the Boston Pops
Holiday Concert on
Saturday, December
7 at 10:30 am.



Symphony Hall is located at 301 Massachusetts Ave. Boston, MA 02115.

I can get to Symphony Hall by driving, taking the T, or riding the bus.

If I have to cross the street, I will make sure to hold hands with a person I came with.



If we drive, we will park near the hall at a public parking space or garage.

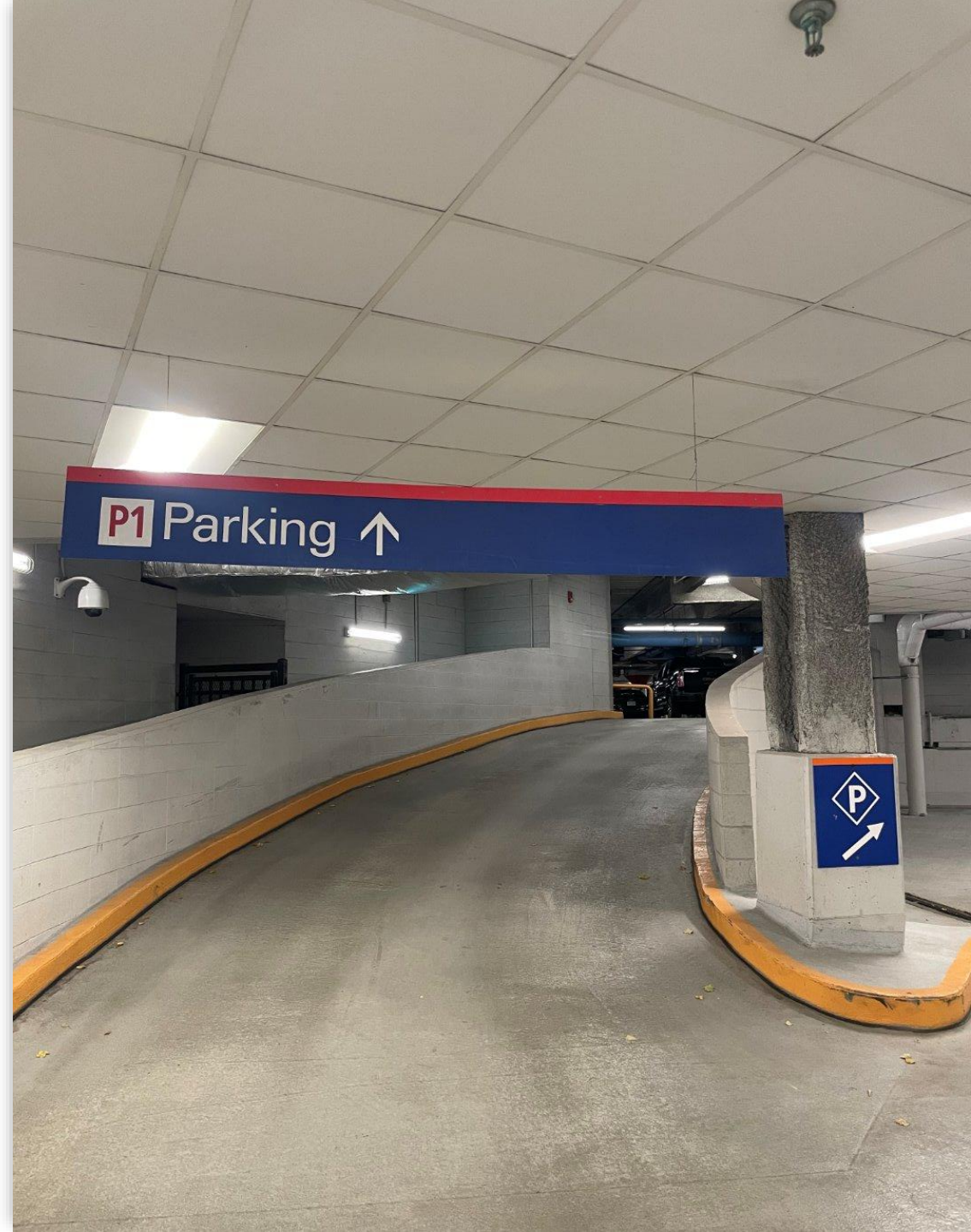
We can park at:

- The Christian Science Plaza Garage 235 Huntington Ave Boston, MA 02115
- Prudential Center Garage 800 Boylston Street Boston, MA 02115
- Westland Avenue Garage 35 Westland Avenue Boston, MA 02115
- Westland Avenue Gainsborough Garage 10 Gainsborough Street Boston, MA 02115

We can also visit the Boston Symphony Orchestra SpotHero Parking Page and book a spot at discounted rates.

These parking spots include garages, valets, and independent spots.

We can Contact SpotHero customer service at 844-324-SPOT (7768) with any questions.





When we arrive, we will enter the lobby.

We may need to wait in line.

If we have any questions, there will be people to help us.

Symphony Hall's entrance on Mass Ave



Box Office

We may already have our tickets. If so, let's head toward the hall to get our tickets scanned!

We may have to wait in line at the Box Office to say our names and pick up our tickets.

If we bring a bag with us,
a security team will check
our bags.

Then, I will walk through
a metal detector. This
process is designed to keep
everyone safe.

I will listen to directions and
cooperate during this
process.



Metal detector



A person called an usher will welcome us into the hall. Ushers can help me find my seat or help me find my way around Symphony Hall. They are very friendly.

The ushers wear black and white uniforms and nametags.

Volunteers can help us, too. Some volunteers will wear red or green t-shirts. They are also very friendly.

There will also be signs to help us find our way, and a map in our program!

There may be people with cameras filming or taking photographs during my visit to Symphony Hall.

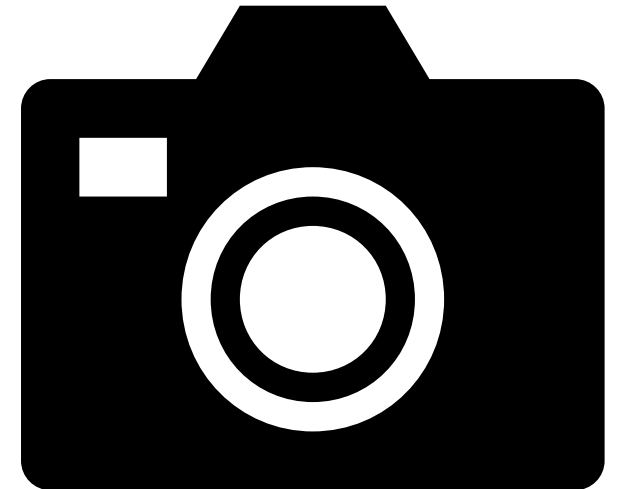
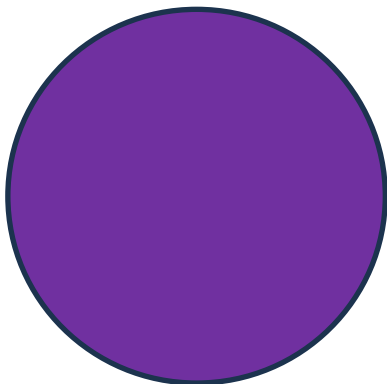
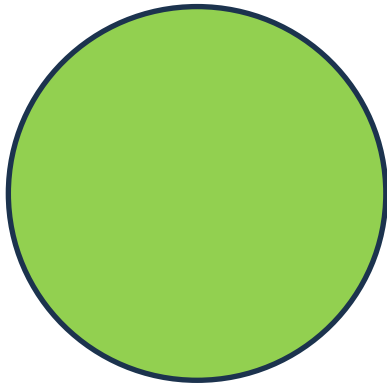
When we come into the building, we will have a choice to give permission for photography or to say we don't want to be photographed.

We will get a sticker to wear on our clothing that tells the photographers...

“Yes” (green)

or

“No” (purple).



I will get an activity bag at the concert. The bag will have crayons, a fidget, a glow stick, and a coloring sheet. I can even color the bag if I want!

I can use the items in my activity bag whenever I would like!

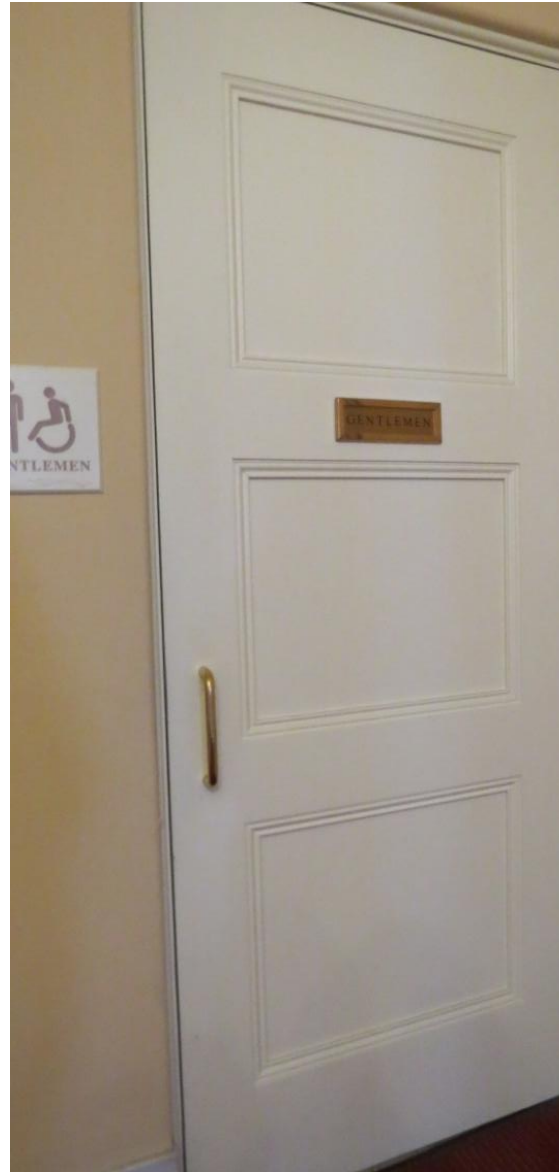


Activity bags



If we arrive early, we can participate in fun preconcert activities like coloring and an instrument playground.

At the instrument playground I can learn to play string or percussion instruments.

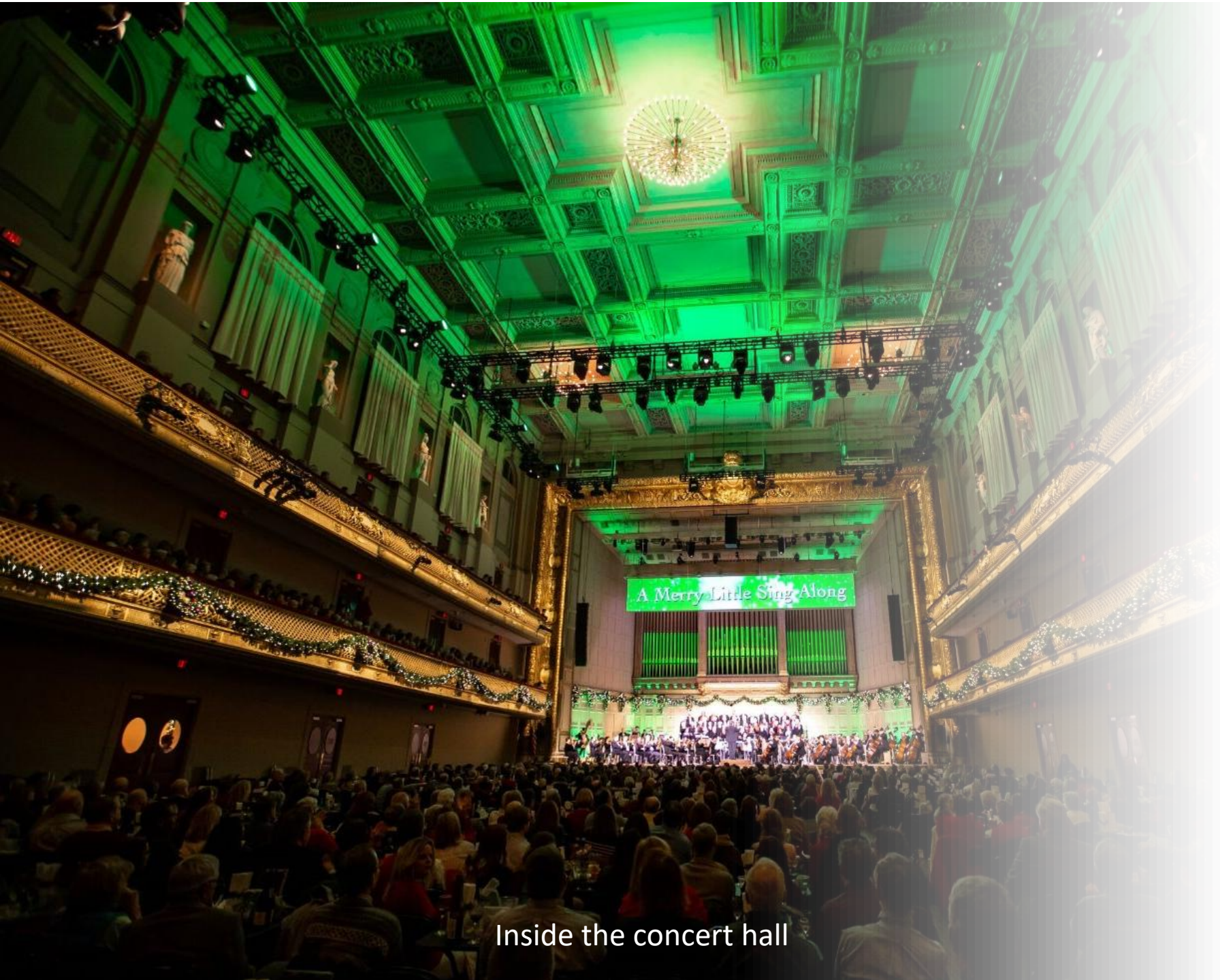


If I need to, I can use the bathroom.

The bathrooms are in the hallways outside the concert hall.

I may have to wait my turn to use the bathroom.

Restrooms



Inside the concert hall

When we're ready, the people I came with and I can find our seats inside the hall.

If our seats are in the balcony, we will walk up the stairs or take an elevator.

Symphony Hall is very big! There are a lot of seats. I will see other groups of families and friends at this Holiday Concert.

Snack Bar



We may purchase snacks or beverages from a concession stand in the hallway before and during the concert.



The conductor, Keith Lockhart, will walk onto the stage at the beginning of the concert. He helps the musicians play together as a group.

Some of the audience members may clap for him. If I want to clap, I can clap too.

Keith Lockhart and the musicians

Once Keith is on the podium, the musicians will start playing the concert.

If the music is too loud or harsh for me, it is all right for me to cover my ears. We can even ask an usher to help the people I came with and me to find seats farther from the stage.



Keith Lockhart conducts the orchestra

I can bring my own noise-reduction headphones and wear them during the event. If I forget them, there will be some there that I can borrow.



Noise-reduction headphones



Keith Lockhart conducts the orchestra

When each piece is over, the conductor will lower his hands, and the audience will clap for the musicians and the conductor.

If I want to clap, I can clap, too.

If I need a break at any point during the concert, I can go out into the hallway or to a Quiet Space.

An usher or volunteer will be happy to show me where those rooms are located.

I will tell the people I came with where I am going, or they may come with me.



Quiet Space

During the concert, Santa Claus will walk down a side aisle of the orchestra floor.

Santa will be smiling and waving hello to the audience.

If I want to, I can wave at Santa from my seat.



Santa walking down aisle



I can keep waving from my seat when Santa walks onto the stage with Keith and the musicians.

After the concert, I can meet Santa Claus in the O'Block-Kay Room behind the concert hall.

If I want to meet Santa, I may need to wait in line first.



Santa in O'Block Kay Room

Now that the concert is over, it's time to leave with the people I came with.

We may have to take the elevator or walk downstairs to leave the hall.



Exit near the Box Office



Concert hall during performance

I am ready and excited to see the Boston Pops at Symphony Hall!

Thank you to our Season Sponsors
@fidelityinvestments and
@fairmontcopley.