



Escape
TO EXTRAORDINARY



Tanglewood
SUMMER 2022

BOSTON SYMPHONY ORCHESTRA
Andris Nelsons Music Director

2022 TANGLEWOOD SEASON

Experience the BSO and Boston Pops, along with some of the most talented performers, conductors, and composers of our generation, for a summer of music in the lush Berkshire Hills. The lineup is ready — all that's missing is you. Join us.

HEALTH AND SAFETY

The health and safety of Tanglewood's audiences, musicians, and staff is our top priority. We continue to collaborate with 9 Foundations, Inc., led by Dr. Joseph G. Allen, to ensure that we are adapting to the best available science and practices to reduce COVID-19 transmission. To respond appropriately to the evolving COVID-19 pandemic, we will share our safety protocols closer to the season at [tanglewood.org/safety](https://www.tanglewood.org/safety).

In addition to the BSO and Boston Pops, Tanglewood is proud to present performances and events from the following:

TANGLEWOOD LEARNING INSTITUTE (TLI)

Unleash your curiosity through TLI's engaging programs, designed to deepen our understanding of music, the arts, and the human spirit.

TANGLEWOOD MUSIC CENTER (TMC)

Get inspired at performances by Fellows of the TMC, the Boston Symphony Orchestra's summer academy for advanced musical study.

BOSTON UNIVERSITY TANGLEWOOD INSTITUTE (BUTI)

Feel the joy of a BUTI concert, featuring skilled musicians aged 14-20 who spend the summer immersed in educational programs at Tanglewood.

RECITAL SERIES

Treat yourself to an unforgettable evening in Ozawa Hall, where world-renowned soloists and ensembles will perform unique recital programs.

POPULAR ARTIST SERIES

Enjoy some of the most engaging performers of pop, rock, jazz, folk, and more through the Popular Artist concert series.



FRIDAY, JUNE 17

POPULAR ARTIST SERIES

7pm, Shed
Ringo Starr and his All-Starr Band
Warren Ham
Edgar Winter
Steve Lukather
Hamish Stuart
Colin Hay
Gregg Bissonette

SATURDAY, JUNE 18

POPULAR ARTIST SERIES

7pm, Shed
Bonnie Raitt
With special guest Lucinda Williams

SATURDAY, JUNE 25– SATURDAY, JULY 2

STRING QUARTET MASTERPASS

Saturday, June 25
8–9:15pm, Linde Center Studio E
Juilliard String Quartet Play & Talk

Wednesday, June 29
7:30–10:30pm, Linde Center Studio E
TMC String Quartet Class with the
Juilliard String Quartet

Thursday, June 30
6–7:15pm, Linde Center Cindy's Café
Table Talk Dinner with members of
the Juilliard String Quartet, TMC
Faculty, and TMC Fellows

7:30–9pm, Linde Center Studio E
Documentary Film: *Strings Attached,
On the Road with the Dover Quartet*

Saturday, July 2
10am, 1pm, & 4pm, Ozawa Hall
TMC String Quartet Marathon

SUNDAY, JUNE 26

POPULAR ARTIST SERIES

2:30pm, Shed
The Mavericks
Nick Lowe and Los Straitjackets

FRIDAY, JULY 1

TANGLEWOOD MUSIC CENTER

8pm, Linde Center Studio E
Vocal Music

SATURDAY, JULY 2

TANGLEWOOD MUSIC CENTER

10am, 1pm, & 4pm, Ozawa Hall
String Quartet Marathon
(Included with String Quartet
MasterPass)

SUNDAY, JULY 3

TANGLEWOOD MUSIC CENTER

10am, Ozawa Hall
Music for Brass and Percussion

SUNDAY, JULY 3 & ~~MONDAY, JULY 4~~ SOLD OUT

POPULAR ARTIST SERIES

8pm, Shed
James Taylor

WEDNESDAY, JULY 6

MASTERPASS

1:30–3:30pm, Linde Center Studio E
TLI presents a TMC Vocal Class led by
Stephanie Blythe

THURSDAY, JULY 7

TLI SHOPTALKS

1–2pm, Linde Center Studio E
Nicole Cabell, soprano

RECITAL SERIES

8pm, Ozawa Hall
Emanuel Ax, piano
Paul Appleby, tenor
Lorelei Ensemble
Dover Quartet

Pathways from Prague, Program 1
JANÁČEK *The Diary of One Who
Disappeared*
DVOŘÁK String Quartet No. 13 in G,
Op. 106



RINGO STARR 6/17



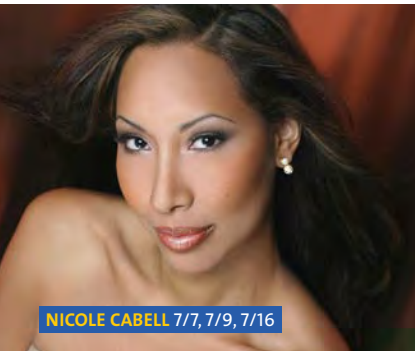
BONNIE RAITT 6/18



JAMES TAYLOR 7/3 & 7/4



ANDRIS NELSONS 7/8–11, 16–17, 23–24, 28–31



NICOLE CABELL 7/7, 7/9, 7/16



LUCAS & ARTHUR JUSSE 7/17

FRIDAY, JULY 8

BOSTON SYMPHONY ORCHESTRA

6pm, Ozawa Hall
Prelude Concert

Members of the Boston Symphony Orchestra

8pm, Shed
Opening Night at Tanglewood
Andris Nelsons, conductor
Jean-Yves Thibaudet, piano
Jack Canfield, baritone
BERNSTEIN *Opening Prayer*
BERNSTEIN Symphony No. 2,
The Age of Anxiety
STRAVINSKY *The Rite of Spring*

SATURDAY, JULY 9

BOSTON SYMPHONY ORCHESTRA

10:30am, Shed
Open Rehearsal, Sunday Program

TANGLEWOOD MUSIC CENTER

6pm, Linde Center Studio E
Prelude Concert

BOSTON SYMPHONY ORCHESTRA

8pm, Shed
Andris Nelsons, conductor
Nicole Cabell, soprano
Aaron Diehl, piano
Carlos SIMON *Motherboxx Connection*
BARBER *Knoxville: Summer of 1915*,
for soprano and orchestra
ELLINGTON *New World A-Coming*,
for piano and orchestra
GERSHWIN *An American in Paris*



SUNDAY, JULY 10

TANGLEWOOD MUSIC CENTER

10am, Ozawa Hall
Chamber Music

BOSTON SYMPHONY ORCHESTRA

2:30pm, Shed
Andris Nelsons, conductor
Håkan Hardenberger, trumpet
RACHMANINOFF *Vocalise*
Helen GRIME Trumpet Concerto
(American premiere; BSO
co-commission)
RACHMANINOFF Symphony No. 3

TANGLEWOOD MUSIC CENTER

8pm, Linde Center Studio E
Vocal Music

MONDAY, JULY 11

TANGLEWOOD MUSIC CENTER

8pm, Shed
Tanglewood Music Center Orchestra
Andris Nelsons, conductor
TMC Conducting Fellows
RAVEL *Le Tombeau de Couperin*
STRAUSS *Death and Transfiguration*
SCHUBERT Symphony No. 8,
Unfinished
STRAUSS “Dance of the Seven Veils,”
from *Salome*



WEDNESDAY, JULY 13

MASTERPASS

1:30–3:30pm, Linde Center Studio E
TLI presents a **TMC Piano Class** led by
Stephen Drury

THURSDAY, JULY 14

TLI SHOPTALKS

1–2pm, Linde Center Studio E
Janai Brugger, soprano

TLI-TMC OPENSTUDIO

2–3:30pm, Ozawa Hall
Dawn Upshaw leads a TMC Vocal Class

RECITAL SERIES

8pm, Ozawa Hall
Emanuel Ax and Orion Weiss, pianos
Cantus
Pathways from Prague, Program 2
JANÁČEK Piano Sonata, “1.X.1905,
From the street...”
DVOŘÁK Slavonic Dances for piano
four-hands
DVOŘÁK, BURLEIGH, and JANÁČEK
Part-songs for men’s voices

FRIDAY, JULY 15

BOSTON SYMPHONY ORCHESTRA

6pm, Ozawa Hall
Prelude Concert

Tanglewood Festival Chorus,
James Burton, conductor

BOSTON POPS ORCHESTRA

8pm, Shed
Keith Lockhart, conductor

The Empire Strikes Back

Join Keith Lockhart and the Boston Pops as they present this classic film with live orchestral accompaniment. "You must feel the Force around you..." The battle for the galaxy intensifies in this thrilling fifth episode of the unfolding saga. As Imperial Forces launch an all-out attack on the Rebel Alliance, Han Solo (Harrison Ford) and Princess Leia (Carrie Fisher) flee to Cloud City where they are captured by Darth Vader. Luke Skywalker (Mark Hamill) journeys to the mysterious, marshy planet of Dagobah, where the wise Jedi Master Yoda teaches the young hero the ways of the Force. Little does Luke know that all his Jedi training will be called upon so soon. A stunning revelation — and a seeming life-or-death duel with Darth Vader — await.



© 2020 & TM LUCASFILM LTD. ALL RIGHTS RESERVED © DISNEY.

Presentation licensed by Disney Concerts in association with 20th Century Fox, Lucasfilm Ltd. and Warner/Chappell Music.

SATURDAY, JULY 16

BOSTON SYMPHONY ORCHESTRA

10:30am, Shed
Open Rehearsal, Sunday Program

BU TANGLEWOOD INSTITUTE

1:30pm, Ozawa Hall
Young Artists Orchestra

TANGLEWOOD MUSIC CENTER

6pm, Linde Center Studio E
Prelude Concert

BOSTON SYMPHONY ORCHESTRA

8pm, Shed
Andris Nelsons, conductor
Nicole Cabell, soprano (Donna Elvira)

Janai Brugger, soprano (Zerlina)

Amitai Pati, tenor (Don Ottavio)

Ryan McKinny, baritone
(Don Giovanni)

Will Liverman, baritone (Leporello)

Alfred Walker, bass-baritone (Masetto)

Ryan Speedo Green, bass
(Commendatore)

Tanglewood Festival Chorus,
James Burton, conductor

MOZART *Don Giovanni*
Sung in Italian with English supertitles

SUNDAY, JULY 17

TANGLEWOOD MUSIC CENTER

10am, Ozawa Hall
Chamber Music

BU TANGLEWOOD INSTITUTE

1:30pm, Ozawa Hall
Young Artists Wind Ensemble

BOSTON SYMPHONY ORCHESTRA

2:30pm, Shed
Andris Nelsons, conductor

Lucas and Arthur Jussen, piano

Ying Fang, soprano

Shenyang, bass-baritone

Tanglewood Festival Chorus,

James Burton, conductor

Fazil *SAY Phoenix (Anka Kuşu)*,
for piano four-hands and
orchestra (American premiere;
BSO co-commission)

BRAHMS *A German Requiem*

TLI FULL TILT

8–9:30pm, Linde Center Studio E

Stephen Drury, piano
RZEWSKI *The People United Will*
Never Be Defeated!

MONDAY, JULY 18

TANGLEWOOD MUSIC CENTER

8pm, Linde Center Studio E
Vocal Music

WEDNESDAY, JULY 20

MASTERPASS

1:30–3:30pm, Linde Center Studio E
TLI presents a **TMC Horn Class** led by
Richard Sebring

THURSDAY, JULY 21

TLI SHOPTALKS

1–2pm, Linde Center Studio E
Julia Bullock, soprano

RECITAL SERIES

6:30–7:30pm, Linde Center Studio E

Pre-concert talk with Richard
Danielpour, Rita Dove,
and Michael Boriskin

**free for 8pm ticket holders*
Get to know the artists behind *A Standing Witness*, featuring composer Richard Danielpour, former U.S. Poet Laureate Rita Dove, and Artistic & Executive Director of the Copland House Michael Boriskin.

8pm, Ozawa Hall
Music from Copland House
Susan Graham, mezzo-soprano

Pierre JALBERT *Crossings*
COPLAND Sextet for clarinet, piano,
and string quartet
Richard DANIELPOUR and
Rita DOVE *A Standing Witness*
(BSO co-commission)

FRIDAY, JULY 22

BOSTON SYMPHONY ORCHESTRA

6pm, Ozawa Hall
Prelude Concert

Members of the Boston Symphony Orchestra

8pm, Shed
Karina Canellakis, conductor
Emanuel Ax, piano

WAGNER *Prelude to Lohengrin*, Act 1
CHOPIN Piano Concerto No. 2
RACHMANINOFF *Symphonic Dances*

SATURDAY, JULY 23

BOSTON SYMPHONY ORCHESTRA

10:30am, Shed
Open Rehearsal, Sunday Program

2:30pm, Shed
Family Concert

Members of the Boston Symphony Orchestra
Thomas Wilkins, conductor

TANGLEWOOD MUSIC CENTER

6pm, Linde Center Studio E
Prelude Concert

8pm, Shed
Tanglewood Music Center Orchestra

Andris Nelsons, conductor
Christine Goerke, soprano
BERLIOZ *The Death of Cleopatra*
MAHLER Symphony No. 5



SUNDAY, JULY 24

TANGLEWOOD MUSIC CENTER

10am, Ozawa Hall
Chamber Music

BU TANGLEWOOD INSTITUTE

1:30pm, Ozawa Hall
Young Artists Chamber Orchestra

BOSTON SYMPHONY ORCHESTRA

2:30pm, Shed
Andris Nelsons, conductor
Julia Bullock, soprano
Seong-Jin Cho, piano
STILL *In Memoriam: The Colored Soldiers Who Died for Democracy*
Jessie MONTGOMERY *Five Freedom Songs* (BSO co-commission)
BRAHMS Piano Concerto No. 2

TANGLEWOOD MUSIC CENTER

8pm, Linde Center Studio E
Vocal Music

WEDNESDAY, JULY 27

MASTERPASS

1:30–3:30pm, Linde Center Studio E
TLI presents a TMC Violin Class led by Alexander Velinzon

RECITAL SERIES

8pm, Ozawa Hall
Takács Quartet
Julien Labro, bandoneon
Bryce DESSNER *Circles*
Julien LABRO *Meditation #1*
Dino SALUZZI *Minguito*
BACH *Wachet auf, ruft uns die Stimme*, BWV 645
Julien LABRO *Astoración*
RAVEL String Quartet
Clarice ASSAD *Clash*

THURSDAY, JULY 28

TLI SHOPTALKS

1–2pm, Linde Center Studio E
Julia Adolphe, composer

TLI-TMC OPENSTUDIO

2–3:30pm, Ozawa Hall
Andris Nelsons leads a TMC Conducting Class

RECITAL SERIES

8pm, Ozawa Hall
Silkroad Ensemble with Rhiannon Giddens
Phoenix Rising
The Grammy Award-winning musical ensemble Silkroad, led by Artistic Director Rhiannon Giddens, performs *Phoenix Rising*. With four major new commissions by an amazing amalgamation of Silkroad artists — Shawn Conley, Sandeep Das, Maeve Gilchrist, and Kaoru Watanabe — plus works from their storied history reimagined for today, the program integrates Giddens' unique worldview with the Ensemble's collective experience during the pandemic. Program also includes new arrangements by Rhiannon Giddens, Colin Jacobsen, Edward Pérez, and Mazz Swift.

FRIDAY, JULY 29

BOSTON SYMPHONY ORCHESTRA

6pm, Ozawa Hall
Prelude Concert

Members of the Boston Symphony Orchestra

8pm, Shed

Andris Nelsons, conductor

Paul Lewis, piano

Julia ADOLPHE *Makeshift Castle* (world premiere; BSO co-commission)

BEETHOVEN Piano Concerto No. 2

BEETHOVEN Piano Concerto No. 3

SATURDAY, JULY 30

BOSTON SYMPHONY ORCHESTRA

10:30am, Shed

Open Rehearsal, Sunday Program

BU TANGLEWOOD INSTITUTE

1:30pm, Ozawa Hall

Young Artists Orchestra

TLI THE BIG IDEA

5–6pm, Ozawa Hall

Joy Harjo, performer, author, speaker, and U.S. Poet Laureate

TANGLEWOOD MUSIC CENTER

6pm, Linde Center Studio E

Prelude Concert

BOSTON SYMPHONY ORCHESTRA

8pm, Shed

Andris Nelsons, conductor

Paul Lewis, piano

Caroline SHAW *Punctum* (world premiere of orchestral version; BSO commission)

BEETHOVEN Piano Concerto No. 1

BEETHOVEN Piano Concerto No. 4



SUNDAY, JULY 31

TANGLEWOOD MUSIC CENTER

10am, Ozawa Hall

Chamber Music

BU TANGLEWOOD INSTITUTE

1:30pm, Ozawa Hall

Young Artists Wind Ensemble

BOSTON SYMPHONY ORCHESTRA

2:30pm, Shed

Andris Nelsons, conductor

Paul Lewis, piano

Elizabeth OGONEK New work (world premiere; BSO co-commission)

FARRENC Symphony No. 3

BEETHOVEN Piano Concerto No. 5,

Emperor

TANGLEWOOD MUSIC CENTER

8pm, Ozawa Hall

Tanglewood Music Center Orchestra

Thomas Adès and JoAnn Falletta,

conductors

TMC Conducting Fellows

DEBUSSY (orch. BUSSER) *Printemps*

STRAVINSKY *Agon*

WILSON *Lumina*

HINDEMITH *Symphonic*

Metamorphosis on Themes by

Carl Maria von Weber

TUESDAY, AUGUST 2

Tanglewood on Parade

Chamber Music by TMC Fellows

throughout the afternoon

7:30pm, Shed

Brass Fanfares

8pm, Shed

Boston Symphony Orchestra

Boston Pops Orchestra

Tanglewood Music Center Orchestra

Thomas Adès, Stefan Asbury, Thomas

Wilkins, JoAnn Falletta, conductors

Program to include

HINDEMITH *Symphonic*

Metamorphosis on Themes by

Carl Maria von Weber

RAVEL *La Valse*

TCHAIKOVSKY *1812 Overture*

WEDNESDAY, AUGUST 3

MASTERPASS

1:30–3:30pm, Linde Center Studio E

TLI presents a TMC Cello Class led by

Astrid Schween

RECITAL SERIES

8pm, Ozawa Hall

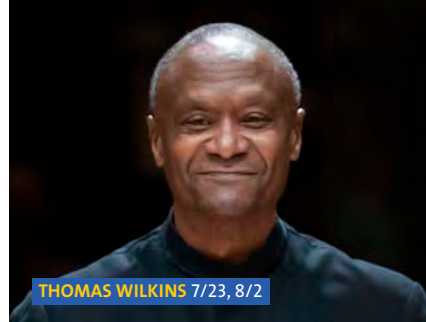
Danish String Quartet

SCHUBERT String Quartet No. 15

in G, D.887

Bent SØRENSEN *Doppelgänger*

SCHUBERT *Der Doppelgänger*



THOMAS WILKINS 7/23, 8/2



RHIANNON GIDDENS 7/28



PAUL LEWIS 7/29–7/31



CHRISTINA & MICHELLE NAUGHTON 8/5



EARTH, WIND & FIRE 8/9



YO-YO MA 8/11, 8/12, 8/14, 8/20

THURSDAY, AUGUST 4– MONDAY, AUGUST 8

TANGLEWOOD MUSIC CENTER

Festival of Contemporary Music

**Ellen Highstein, Merwin Geffen, M.D.
and Norman Solomon, M.D., Festival
of Contemporary Music Director
Tony Arnold, Stephen Drury, George
Lewis, and Astrid Schween, co-curators**

The Festival of Contemporary Music has been endowed in perpetuity by the generosity of Dr. Raymond H. and Mrs. Hannah H. Schneider, with additional support from the Fromm Music Foundation, the National Endowment for the Arts, the Aaron Copland Fund for Music, the Amphion Foundation, and the Helen F. Whitaker Fund.

See individual listings for event details.

THURSDAY, AUGUST 4

TLI SHOPTALKS

1–2pm, Linde Center Studio E
**Ellen Highstein hosts Festival of
Contemporary Music Concert Curators**

TANGLEWOOD MUSIC CENTER

Festival of Contemporary Music

8pm, Ozawa Hall
**TMC Fellows
Stefan Asbury and Stephen Drury,
conductors
Thomas Adès, piano
Tony Arnold, soprano
KNUSSSEN *Requiem: Songs for Sue*
Alvin SINGLETON *Again*
Thomas ADÈS *Mazurkas, Op. 27*
HYLA *Pre-Pulse Suspended*
Christopher TRAPANI *Waterlines***

FRIDAY, AUGUST 5

TANGLEWOOD MUSIC CENTER

Festival of Contemporary Music

1–2:15pm, Linde Center Gordon
Studio
TLI presents Coffee with Composers

2:30pm, Ozawa Hall
Allison LOGGINS-HULL *The Pattern*
WUORINEN *Ave Maria...Virgo Serena*
(*Josquin*)
Michael GANDOLFI New work
(world premiere)
Erin GRAHAM *Manual*
CAGE *Variations III*
EASTMAN *Gay Guerrilla*

BOSTON SYMPHONY ORCHESTRA

6pm, Ozawa Hall
Prelude Concert
**Members of the Boston Symphony
Orchestra**

8pm, Shed
**Earl Lee, conductor
Christina and Michelle Naughton,
pianos
Brian Raphael NABORS *Pulse*
POULENC *Concerto in D minor for two
pianos and orchestra*
MENDELSSOHN *Symphony No. 3,
Scottish***

SATURDAY, AUGUST 6

BOSTON SYMPHONY ORCHESTRA

10:30am, Shed
Open Rehearsal, Sunday Program

TANGLEWOOD MUSIC CENTER

Festival of Contemporary Music

1–2:15pm, Linde Center Gordon
Studio
TLI presents Coffee with Composers

BU TANGLEWOOD INSTITUTE

1:30pm, Ozawa Hall
Young Artists Chorus

TANGLEWOOD MUSIC CENTER

Festival of Contemporary Music

6pm, Ozawa Hall
Prelude Concert
Augusta Read THOMAS New work
(world premiere)
DAVIDOVSKY String Quartet No. 6,
Fragments
Unsub CHIN *ParaMetaString*
Eleanor ALBERGA String Quartet No. 2

BOSTON SYMPHONY ORCHESTRA

8pm, Shed
**JoAnn Falletta, conductor
Joshua Bell, violin
Roberto SIERRA *Fandangos*
TCHAIKOVSKY *Violin Concerto*
RESPIGHI *Fountains of Rome*
RESPIGHI *Pines of Rome***



SUNDAY, AUGUST 7

TANGLEWOOD MUSIC CENTER

Festival of Contemporary Music

10am, Ozawa Hall

Chamber Music

Carlos SIMON *Warmth from Other Suns*

Ricardo ZOHN-MULDOON *Shakespeare*

Sonnets

John HARBISON Piano Sonata No. 2,

3rd movement

Andile KHUMALO *Cry Out*

Jesse JONES *Dark Is Yonder Town*

George LEWIS *Born Obligato*

1–2:15pm, Linde Center Gordon

Studio

TLI presents Coffee with Composers

BOSTON SYMPHONY ORCHESTRA

2:30pm, Shed

Thomas Adès, conductor

Pamela Frank, violin

Antoine Tamestit, viola

Lorelei Ensemble

Thomas ADÈS *Shanty – Over the Sea*

MOZART Sinfonia concertante

for violin and viola, K.364

HOLST *The Planets*

TANGLEWOOD MUSIC CENTER

Festival of Contemporary Music

8pm, Linde Center Studio E

TLI presents Silent Film Music by

TMC Composition Fellows

MONDAY, AUGUST 8

TANGLEWOOD MUSIC CENTER

Festival of Contemporary Music

8pm, Ozawa Hall

Tanglewood Music Center Orchestra

George Benjamin, conductor

TMC Vocal Fellows

George BENJAMIN *Lessons in Love*

and Violence (American premiere)

Concert performance

TUESDAY, AUGUST 9

POPULAR ARTIST SERIES

7pm, Shed

Earth, Wind & Fire

THURSDAY, AUGUST 11

TLI SHOPTALKS

1–2pm, Linde Center Studio E

Emanuel Ax, pianist

TLI-TMC OPENSTUDIO

2–3:30pm, Ozawa Hall

Yo-Yo Ma leads a TMC Cello Class

FRIDAY, AUGUST 12

BOSTON SYMPHONY ORCHESTRA

6pm, Ozawa Hall

Prelude Concert

Members of the Boston Symphony

Orchestra

8pm, Shed

Emanuel Ax, piano

Pamela Frank and Leonidas Kavakos,

violins

Antoine Tamestit, viola

Yo-Yo Ma, cello

Pathways from Prague, Program 3

DVOŘÁK Terzetto in C for two violins

and viola, Op. 74

KAPRÁLOVÁ *Two Ritournelles*,

for cello and piano, Op. 25

JANÁČEK *Fairy Tale*, for cello and piano

DVOŘÁK Piano Quintet No. 2 in A,

Op. 81

SATURDAY, AUGUST 13

BOSTON SYMPHONY ORCHESTRA

10:30am, Shed

Open Rehearsal, Sunday Program

BU TANGLEWOOD INSTITUTE

1:30pm, Ozawa Hall

Young Artists Orchestra

TANGLEWOOD MUSIC CENTER

6pm, Linde Center Studio E

Prelude Concert

BOSTON SYMPHONY ORCHESTRA

8pm, Shed

Boston Symphony Orchestra

Dima Slobodeniouk, conductor

Leonidas Kavakos, violin

DUTILLEUX *Métaboles*

MENDELSSOHN Violin Concerto

DEBUSSY *Prelude to The Afternoon*

of a Faun

RAVEL *Mother Goose* (complete)

SUNDAY, AUGUST 14

TANGLEWOOD MUSIC CENTER

10am, Ozawa Hall
Chamber Music

BOSTON SYMPHONY ORCHESTRA

2:30pm, Shed
Cristian Măcelaru, conductor
Yo-Yo Ma, cello

Anna CLYNE *Masquerade*
ELGAR Cello Concerto
DEBUSSY *La Mer*
ENESCU Romanian Rhapsody No. 1

TANGLEWOOD MUSIC CENTER

8pm, Shed
Tanglewood Music Center Orchestra
Stefan Asbury, conductor
TMC Conducting Fellows

PRICE *Ethiopia's Shadow in America*
BARTÓK Suite from *The Miraculous Mandarin*
RACHMANINOFF Symphony No. 2



TUESDAY, AUGUST 16

RECITAL SERIES

8pm, Ozawa Hall
Garrick Ohlsson, piano
BRAHMS *Complete Works for Piano*,
Program 1
Eight Piano Pieces, Op. 76
11 Variations on an Original Theme,
Op. 21, No. 1
14 Variations on a Hungarian Melody,
Op. 21, No. 2
Four Ballades, Op. 10
Variations on a Theme of Paganini,
Op. 35, Book 1

THURSDAY, AUGUST 18

TLI SHOPTALKS

1–2pm, Linde Center Studio E
Dima Slobodeniouk, conductor

RECITAL SERIES

8pm, Ozawa Hall
Garrick Ohlsson, piano
BRAHMS *Complete Works for Piano*,
Program 2
Sonata No. 2 in F-sharp minor, Op. 2
Six Piano Pieces, Op. 118
Three Intermezzi, Op. 117
Variations and Fugue in B-flat,
on a Theme by Handel, Op. 24

FRIDAY, AUGUST 19

BOSTON SYMPHONY ORCHESTRA

6pm, Ozawa Hall
Prelude Concert
Members of the Boston Symphony Orchestra

BOSTON POPS ORCHESTRA

8pm, Shed
Keith Lockhart, conductor
Special Guest Artists
Remembering Stephen Sondheim
Stephen Sondheim left an unmatched legacy that has transformed American musical theater. Keith Lockhart, the Boston Pops, and a stellar Broadway cast take us on a journey through Keith's favorite Sondheim creations, from the dazzling lyrical contributions of *West Side Story*, to the organic perfection of shows like *Company* and *Sweeney Todd*, and the audacity of later works like *Assassins*. Come celebrate the legacy of a true musical luminary on this very special night at Tanglewood.

SATURDAY, AUGUST 20

BOSTON SYMPHONY ORCHESTRA

10:30am, Shed
Open Rehearsal, Sunday Program

TLI THE BIG IDEA

5–6pm, Ozawa Hall
Tony Kushner, Pulitzer Prize-winning playwright

BOSTON SYMPHONY ORCHESTRA

8pm, Shed
John Williams – The Tanglewood 90th Birthday Celebration
Ken-David Masur, conductor
with special guests
Martin Grubinger, percussion
Yo-Yo Ma, cello
Branford Marsalis, saxophone
Eric Revis, bass
James Taylor, vocalist
Jessica Zhou, harp
Tanglewood celebrates the 90th birthday of one of its most beloved figures, John Williams, in a special program featuring a selection of his incomparable concert music composed for the BSO and Boston Pops, along with beloved film themes. Join the BSO and an all-star lineup of exceptional guest artists as they salute this inimitable musical icon in an evening of brilliant music and special surprises.

SUNDAY, AUGUST 21

BOSTON SYMPHONY ORCHESTRA

2:30pm, Shed
Boston Symphony Orchestra
Dima Slobodeniouk, conductor
Itzhak Perlman, violin
Unsub CHIN *subito con forza*
BRUCH Violin Concerto in G minor
BRAHMS Symphony No. 1

TLI FULL TILT

8–9:30pm, Ozawa Hall
Cécile McLorin Salvant, singer/ songwriter
Ghost Song
Embark on a breathtaking journey with vocalist, composer, multiple Grammy winner, and MacArthur Fellow Cécile McLorin Salvant, exploring the many ways people can be haunted — by lingering memories, roads not taken, ghosts real and imagined. Salvant defies genre in her album *Ghost Song*, which features everything from torch songs to Sondheim-style music theater dialogues, ancient folk melodies, and jazz meditations.

TUESDAY, AUGUST 23

RECITAL SERIES

8pm, Ozawa Hall
Garrick Ohlsson, piano
BRAHMS *Complete Works for Piano*, Program 3
Two Rhapsodies, Op. 79
Seven Fantasies, Op. 116
Variations on a Theme of Paganini, Op. 35, Book 2
Sonata No. 3 in F minor, Op. 5

THURSDAY, AUGUST 25

TLI SHOPTALKS

1–2pm, Linde Center Studio E
Dashon Burton, bass-baritone
RECITAL SERIES
8pm, Ozawa Hall
Garrick Ohlsson, piano
BRAHMS *Complete Works for Piano*, Program 4
Scherzo in E-flat minor, Op. 4
Variations in F-sharp minor on a theme by Schumann, Op. 9
Sonata No. 1 in C, Op. 1
16 Waltzes, Op. 39
Four Piano Pieces, Op. 119

FRIDAY, AUGUST 26

BOSTON SYMPHONY ORCHESTRA

6pm, Ozawa Hall
Prelude Concert
Members of the Boston Symphony Orchestra
8pm, Shed
Anna Rakitina, conductor
Gil Shaham, violin
Tanglewood Festival Chorus,
James Burton, conductor
SHOSTAKOVICH Waltz No. 2 from Suite No. 1 for Variety Orchestra
DVOŘÁK Violin Concerto
SHOSTAKOVICH Symphony No. 3, *The First of May*
BORODIN Polovtsian Dances from *Prince Igor*

SATURDAY, AUGUST 27

BOSTON SYMPHONY ORCHESTRA

10:30am, Shed
Open Rehearsal, Sunday Program
8pm, Shed
Michael Tilson Thomas, conductor
Alexander Malofeev, piano
RIMSKY-KORSAKOV *Dubínushka*
RACHMANINOFF Piano Concerto No. 3
COPLAND Symphony No. 3



SUNDAY, AUGUST 28

BOSTON SYMPHONY ORCHESTRA

2:30pm, Shed
Michael Tilson Thomas, conductor
Vocal soloists to include
Dashon Burton, bass-baritone
Tanglewood Festival Chorus,
James Burton, conductor
BEETHOVEN Symphony No. 9

TUESDAY, AUGUST 30

POPULAR ARTIST SERIES

7pm, Shed
Brandi Carlile

SATURDAY, SEPTEMBER 3

POPULAR ARTIST SERIES

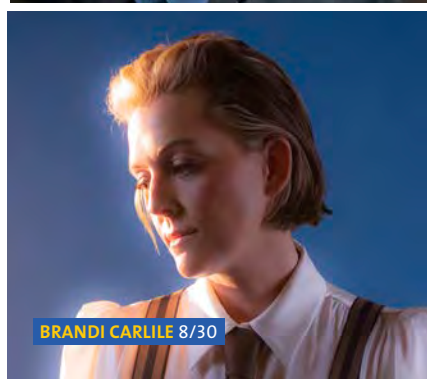
7pm, Shed
Judy Collins and Richard Thompson



JOHN WILLIAMS 8/20



KEITH LOCKHART 7/15, 8/19



BRANDI CARLILE 8/30

PURCHASING TICKETS

Tickets to all Tanglewood events go on sale to the public on Thursday, March 10, 2022, at 10am. Friends of Tanglewood may order advance tickets; visit [tanglewood.org/advancetickets](https://www.tanglewood.org/advancetickets) for more information.

Online Ticket Orders

- Visit [tanglewood.org](https://www.tanglewood.org) for tickets
- Per-ticket handling fee waived on advance orders placed before March 8, 2022, at 10am

Telephone Ticket Orders

- Friends of Tanglewood may place telephone orders during their advance ticketing period at 617-266-1200 or 888-266-1200
- Per-ticket handling fee waived on advance orders placed before March 8, 2022, at 10am

Special Group Discounts

- Group benefits include ticket discounts, advance sales, lawn tickets, and exclusive use of private tents
- Group tickets are not available for Popular Artist concerts
- Please email the Group Sales Office at groupsales@bso.org, or call 617-638-9345 or 800-933-4255 for information
- Groups are defined as 20 or more people

SATURDAY MORNING REHEARSALS

- Begin at 10:30am in the Koussevitzky Music Shed, with pre-rehearsal talk at 9:30am free to rehearsal ticket holders
- Rehearsals may repeat passages or omit movements or entire pieces

PRELUDE CONCERTS

Admission to 6pm Prelude Concerts is complimentary and only available to patrons with tickets to that evening's 8pm performance.

TMC & BUTI TICKETS

TMC Orchestra Concerts

- Friends of Tanglewood may order tickets during their advance sale period
- Tickets go on sale to the public on March 10

TMC and Festival of Contemporary Music

- TMC recitals and Festival of Contemporary Music recitals are free

BERKSHIRE PASS

Year-round Berkshire County residents may purchase a season lawn pass for \$100. A valid Massachusetts license is required to obtain the photo ID pass. Passes will be available for in-person purchase only at the Main Gate Box Office. Pass is valid for Koussevitzky Music Shed and Ozawa Hall concerts where lawn seating is available, except for Popular Artist concerts.

ACCESSIBILITY SERVICES

- Accessible seats and other accommodations are available
- For more information, please contact us at 617-638-9431, email access@bso.org, or visit [tanglewood.org/accessibility](https://www.tanglewood.org/accessibility)
- Please note: balcony levels of Ozawa Hall are not accessible by elevator; if you require accessible seating, accommodations will be made on the orchestra level

LAWN PASS BOOK

Purchasing a Lawn Pass Book provides flexibility and savings. No further ticketing is necessary.

- Books include 11 tickets valid for all regular and specially priced BSO concerts and Pops concerts in the Koussevitzky Music Shed and Ozawa Hall (not valid for Popular Artist concerts)
- Books cost \$200

For information about becoming a Friend of Tanglewood, please call 617-638-9267.

Photography: Aram Boghosian, Robert Torres

TANGLEWOOD FOR KIDS

- Free lawn tickets are available to children aged 17 or younger for all programs except Popular Artist concerts
- For Popular Artist concerts, free lawn tickets are available for children aged 2 or younger
- Tickets are available in person at the Main Gate Box Office on the day of the performance

STUDENT DISCOUNT

- 50% discount on Friday-evening lawn tickets for college and graduate students aged 18+ with a student ID
- Tickets must be purchased in person at Main Box Office, only on the night of the performance

PARKING

- Free parking is available
- Preferred parking is offered to Friends of Tanglewood at the \$750 level or higher (call Friends Office at 617-638-9267 for details)

BSO NOW

Watch Tanglewood concerts from home! Each concert marked with BSO NOW can be livestreamed or viewed on demand beginning one week after the livestream performance. Visit [bso.org/now](https://www.tanglewood.org/now) to learn more and get your access pass in late spring.



OFFICIAL HOSPITAL PARTNER OF TANGLEWOOD



TICKET PRICES

Koussevitzky Music Shed

TMC Orchestra (7/11, 7/23, 8/14)

Saturday Morning Rehearsals (7/9, 7/16, 7/23, 7/30, 8/6, 8/13, 8/20, 8/27)

Standard (7/9, 7/10, 7/23, 7/24, 7/31, 8/5, 8/7, 8/26)

Special (7/16, 7/17, 7/22, 7/29, 7/30, 8/13, 8/27, 8/28)

Premium (7/8, 7/15, 8/2, 8/6, 8/12, 8/14, 8/19, 8/20, 8/21)

STARTING AT	LAWN
\$26	\$16
\$27	\$19
\$36	\$21
\$47	\$25
\$47	\$32

Ozawa Hall

Recitals (Standard) (7/21, 7/27, 8/3)

Recitals (Premium) (7/7, 7/14, 7/28, 8/16, 8/18, 8/23, 8/25)

TMC Orchestra (7/31, 8/8)

BUTI (7/16, 7/30, 8/13)

STARTING AT	LAWN
\$37	\$20
\$47	\$22
\$40	\$15
\$15	N/A

Please note: Pricing structure is subject to change throughout the season. Visit tanglewood.org for the most up-to-date information.

Tanglewood Learning Institute (TLI)

String Quartet MasterPass (7 events)

MasterPass Classes (5 events)

ShopTalks (8 events)

OpenStudio (7/14)

OpenStudio (7/28)

OpenStudio (8/11)

Full Tilt

The Big Idea

TMC Festival of Contemporary Music, "TLI Presents"

\$150 package \$15 each (Linde Center) \$25 each (Ozawa Hall)
\$90 package, \$20 each
\$144 package, \$20 each
\$35
\$45
\$60
\$25
Starting at \$47
\$20 (8/7), all others free

Popular Artist Series

Ringo Starr

Bonnie Raitt with Lucinda Williams

The Mavericks, Nick Lowe & Los Straitjackets

James Taylor (7/3 only, 7/4 sold out)

Earth, Wind & Fire

Brandi Carlile

Judy Collins and Richard Thompson

\$159, \$129, \$99, \$49, \$32 Lawn*
\$129, \$99, \$79, \$45, \$32 Lawn*
\$89, \$69, \$59, \$49, \$39, \$29 Lawn*
\$120, \$85, \$29 Lawn*
\$129, \$99, \$79, \$59, \$39, \$29 Lawn*
\$154, \$134, \$104, \$54, \$44 Lawn*
\$99, \$79, \$65, \$49, \$24 Lawn*

*Lower Lawn price for children ages 2–17 only

Welcome TO TANGLEWOOD

We believe that music belongs to everyone, and we are committed to ensuring that each person is treated with dignity and respect. Thank you for doing your part to create a welcoming and inclusive environment.

