

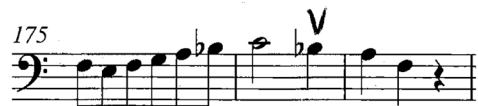
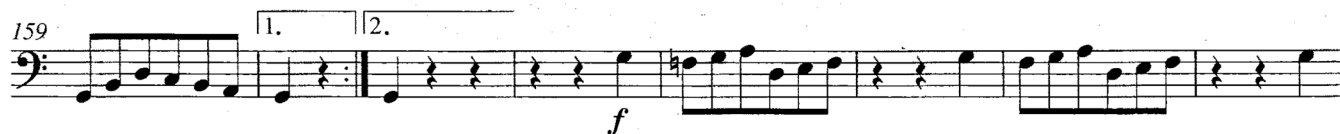
**Boston Symphony Orchestra**  
Resident Fellowship  
Application Repertoire

BASS

Bottesini      Concerto No. 2 [Mvt. I, exposition only]  
Beethoven      Symphony No. 5 [Mvt. III: Trio mm. 141-177]  
Brahms          Symphony No. 1 [Mvt. 1: **E** to downbeat of 2<sup>nd</sup> ending]  
Mozart          Symphony No. 35 [Mvt. IV: m. 134 to **E**]  
Verdi            *Othello* [Act IV: **U** to 7 after **X**]

BEETHOVEN - Symphony No. 5 [Mvt. 3: Trio, pickup to m.141 to m. 177]

Contrabbasso



# Symphony No. 1

BASSO

1st Movement

Johannes Brahms, Op. 68

Allegro

161 **E** arco *ff*

162 *sf* *sf* *ff* *ff*

171 *ff*

180 *ff*

188 1. 2. *ff*

MOZART - Symphony No. 35 [Mvt. IV: m.134 to E]

Violoncello e Basso

**Presto**

134 V

139 V p

147

152 f

158 V

163 V

168 V

173

178 sf

Detailed description: This is a page of musical notation for the Cello and Bass parts of the fourth movement of Mozart's Symphony No. 35. The score is in bass clef with a key signature of one sharp (F#) and a 4/4 time signature. The tempo is marked 'Presto'. The page contains eight staves of music, numbered 134 through 178. The notation includes various rhythmic patterns, slurs, and dynamic markings such as 'p' (piano), 'f' (forte), and 'sf' (sforzando). There are also several 'V' markings above notes, likely indicating bowing or breath marks. The music is characterized by rapid sixteenth-note passages and some more melodic lines.

CONTRABASSI

**U** *POCO PIÙ MOSSO* ♩ = 80  
I SOLI CONTRABASSI A/4 CORDE - **CON SORDINA**

*legato*

4<sup>a</sup> Corda 3<sup>a</sup> C. 2<sup>a</sup> C. 1<sup>a</sup> C. *un po' marcato*

*più marcato* *f* *dim.* *morendo* **V** *ppp*

**X** *p*

*Un po' più marcato e cres.*  
*staccate*

**BASSI** *f* 3<sup>a</sup> C. 4<sup>a</sup> C. 3<sup>a</sup> C. 2<sup>a</sup> C. 1<sup>a</sup> C. *ff* **3** **LEVARE LE SORDINE**